

ANEXO 3: RESPALDO FOTOGRÁFICO

LAGO TORCA

CLASE CYANOPHYCEAE

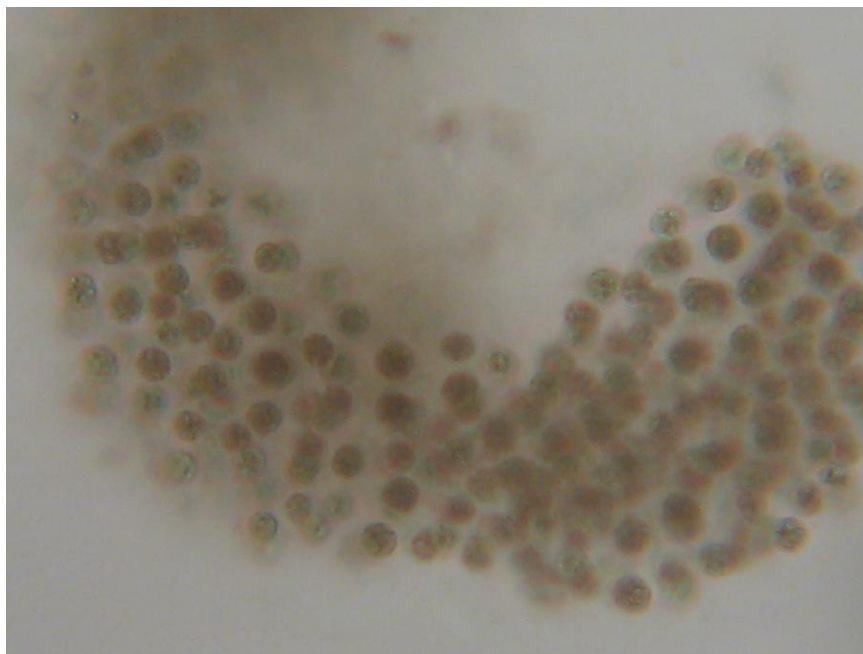


Fig. 01: *Microcystis aff aeruginosa* (Kützing) Kützing, 25x
Marzo, 2014

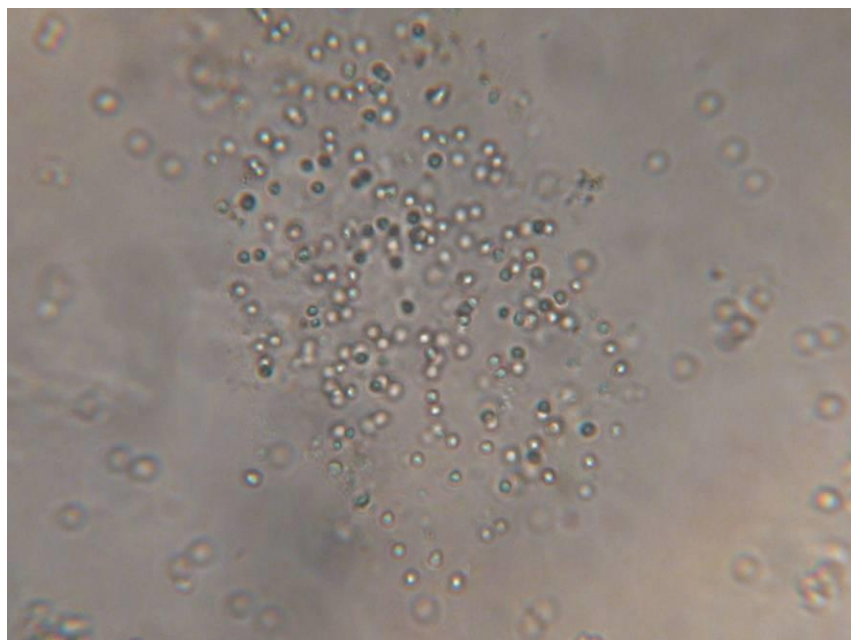


Fig. 02: *Microcystis elachista* (West and West) Starmach, 40X
Junio, 2013



Fig. 03: *Anabaena oscillarioides* Bory, 25x
Junio, 2013



Fig. 04: *Anabaena oscillarioides* Bory, 25x
Marzo, 2014



Fig. 05: *Scenedesmus quadricauda* (Turpin) Brébisson, 25x
Marzo, 2014

LAGO VICHUQUÉN
CLASE CYANOPHCEAE

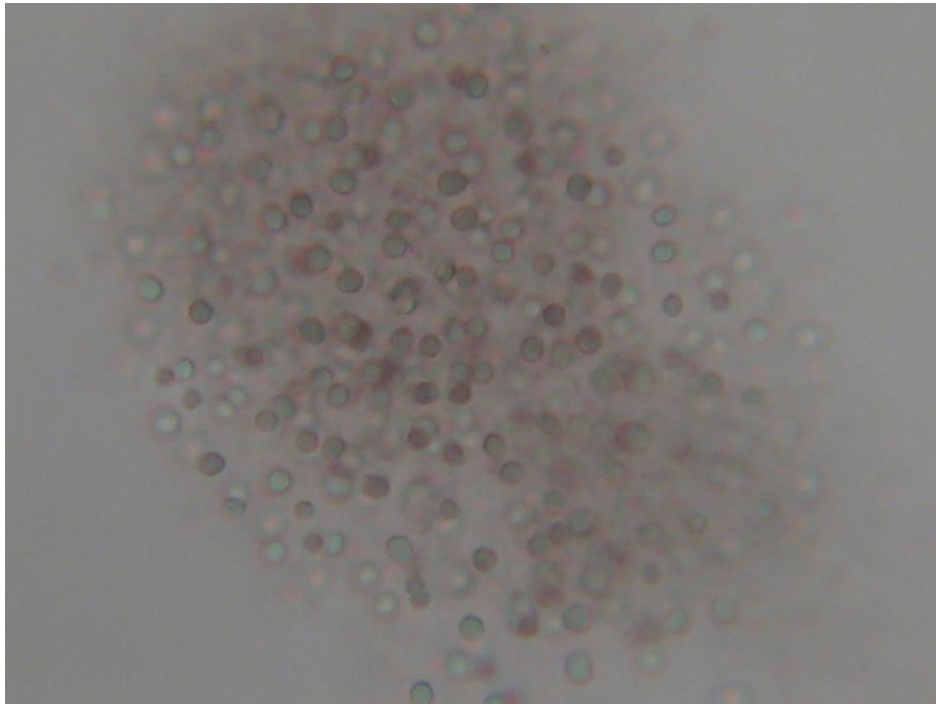


Fig. 06: *Microcystis aff aeruginosa* (Kützing) Kützing, 25x
Marzo, 2014

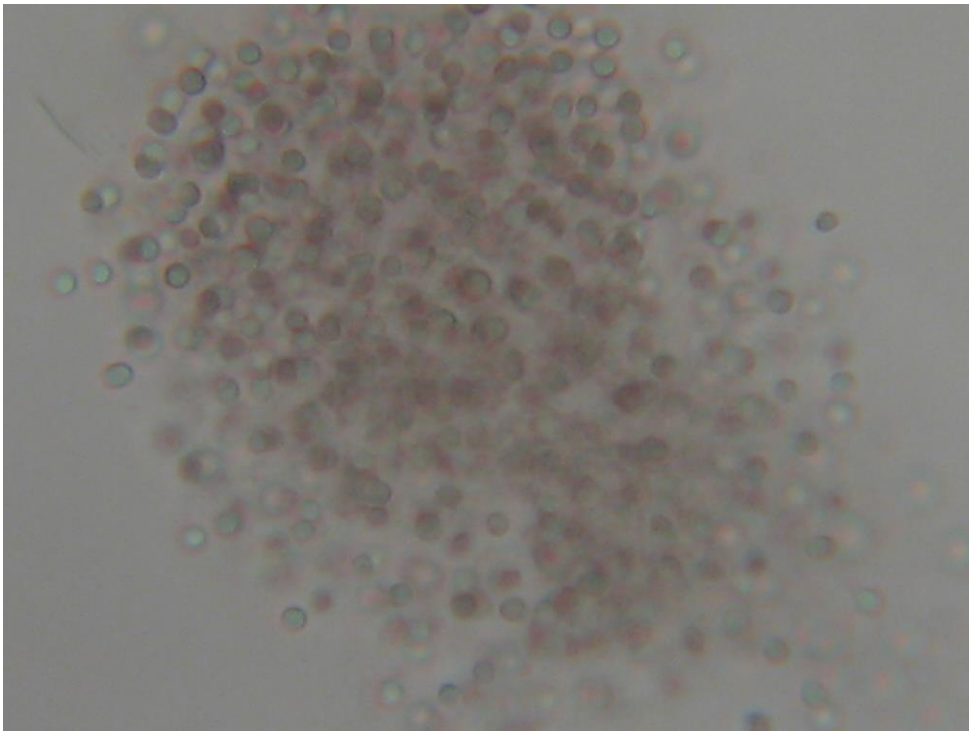


Fig. 07: *Microcystis aff aeruginosa* (Kützing) Kützing, 25x
Marzo, 2014

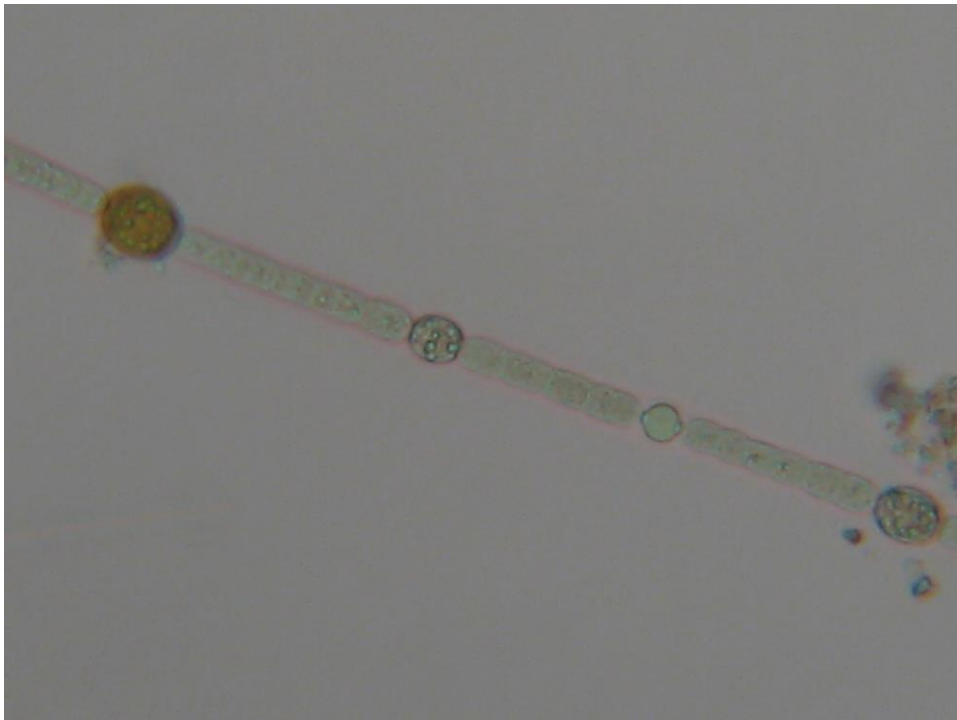


Fig. 08: *Anabaena sp1.*, 25x
Marzo, 2014



Fig. 09: *Anabaena sp1.*, 25x
Marzo, 2014

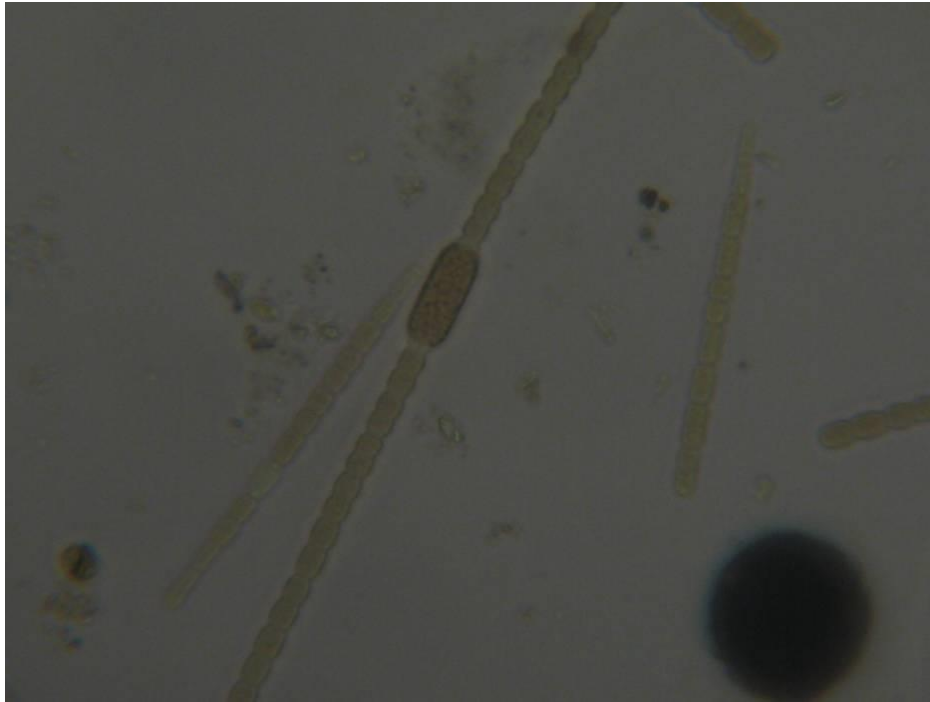


Fig. 10: *Anabaena aff oscillarioides* Bory, 40 x
Junio, 2014

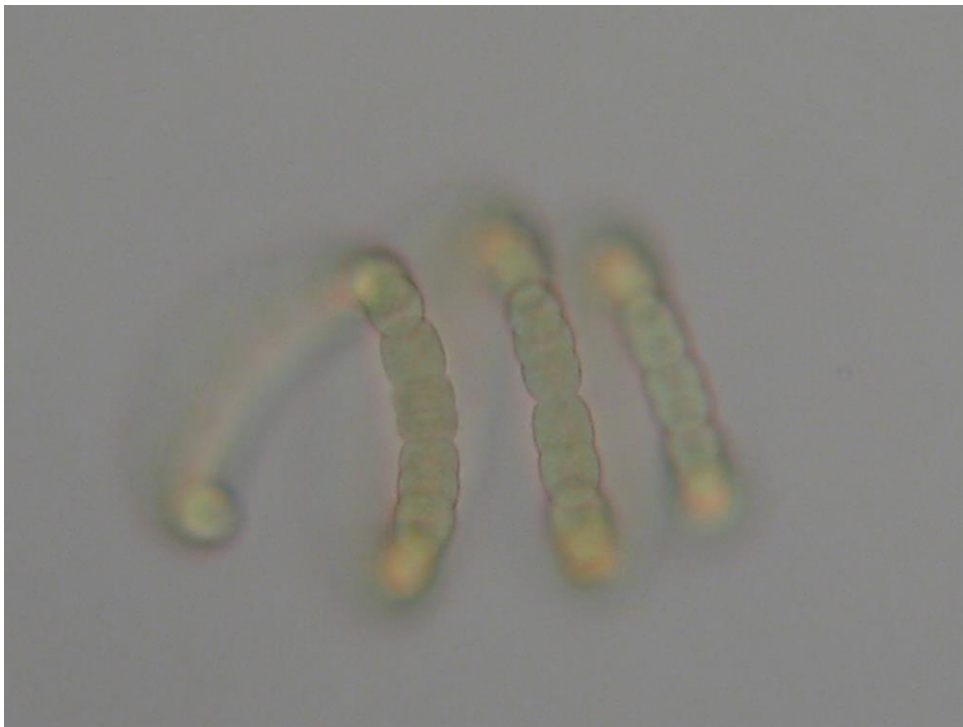


Fig. 11: *Anabaena sp2.*, 25x
Marzo, 2014

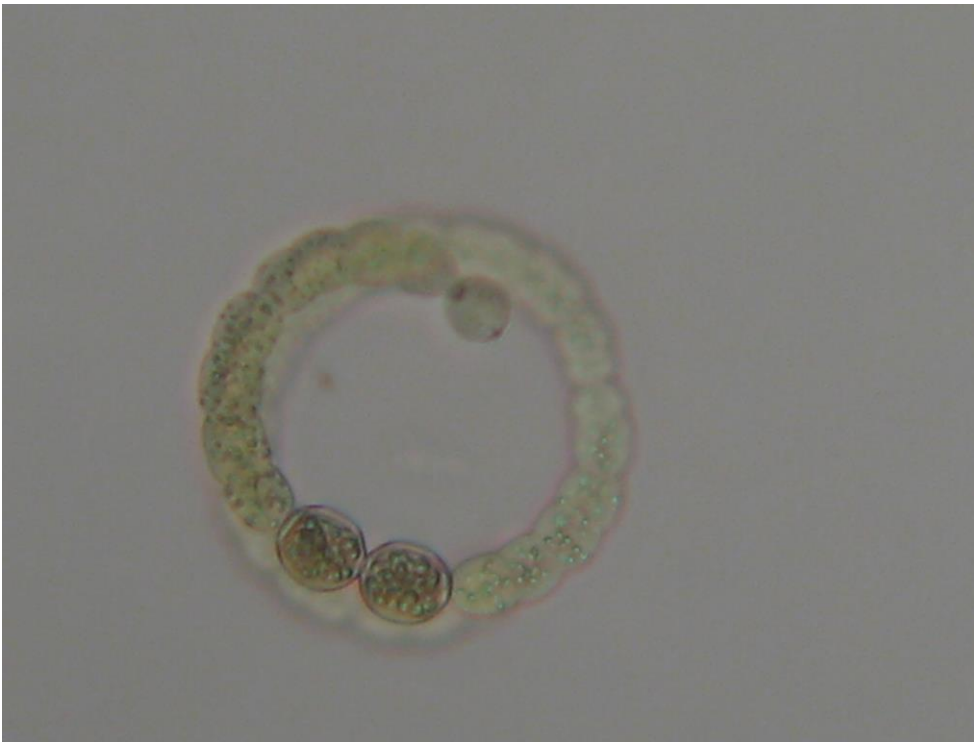


Fig. 12: *Anabaenopsis* sp., 25x
Marzo, 2014

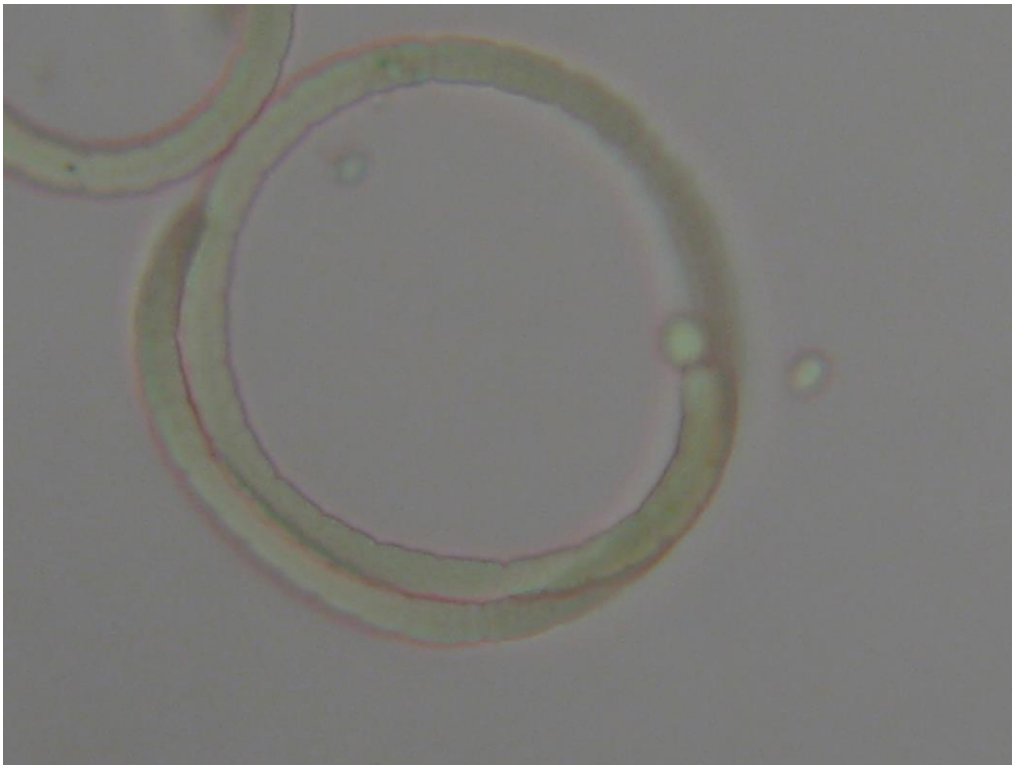


Fig. 13: *Anabaenopsis* sp., 25x
Marzo, 2014

CLASE DINOPHYCEAE

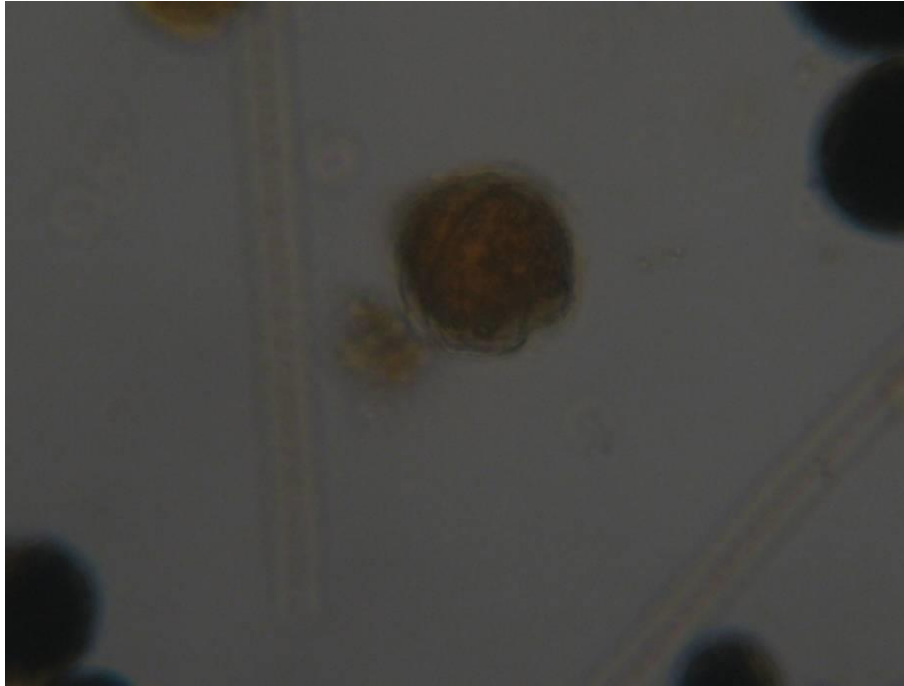


Fig. 14: *Peridinium sp.*, 25 x
Junio, 2014

CLASE BACILLARIOPHYCEAE



Fig. 15: *Fragilaria ulna* (Nitzsch) Lange-Bertalot, 25x
Marzo, 2014

CHLOROPHYCEAE

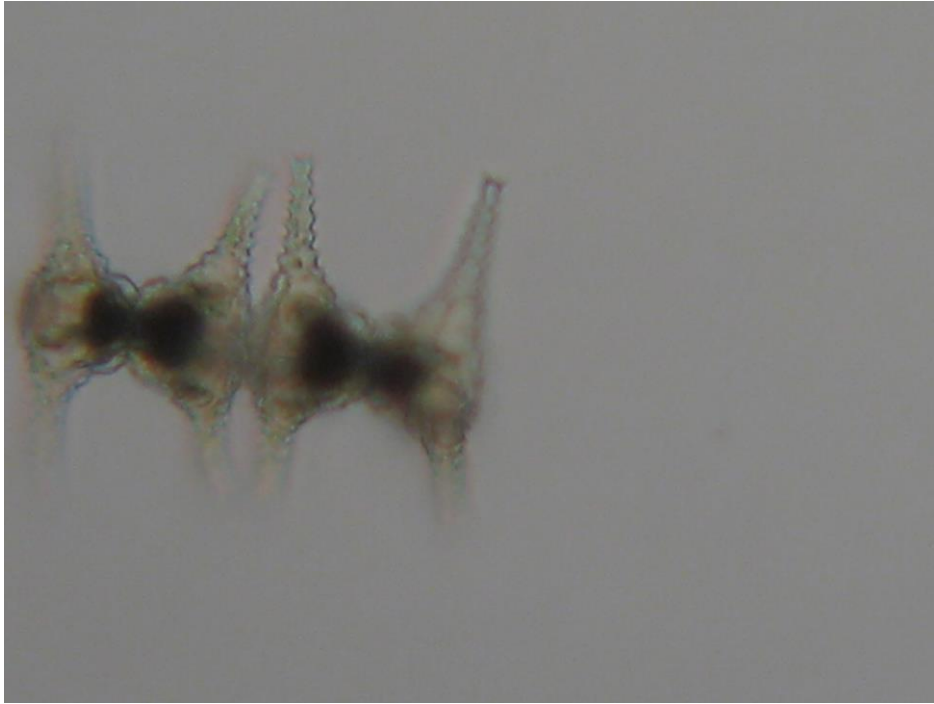


Fig. 16: *Staurastrum* sp., 25x
Marzo, 2014

LAGUNA SAN PEDRO
CLASE CYANOPHYCEAE



Fig. 17: *Gomphosphaeria lacustris* Chodat, 25x
Marzo, 2014

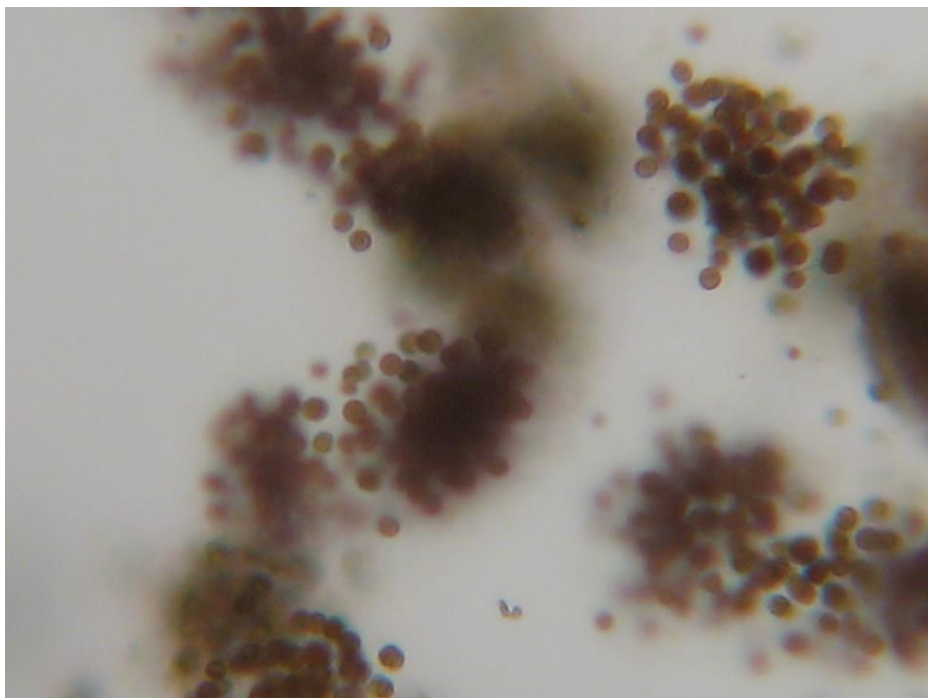


Fig. 18: *Microcystis aeruginosa* (Kützing) Kützing, 25x
Marzo, 2014

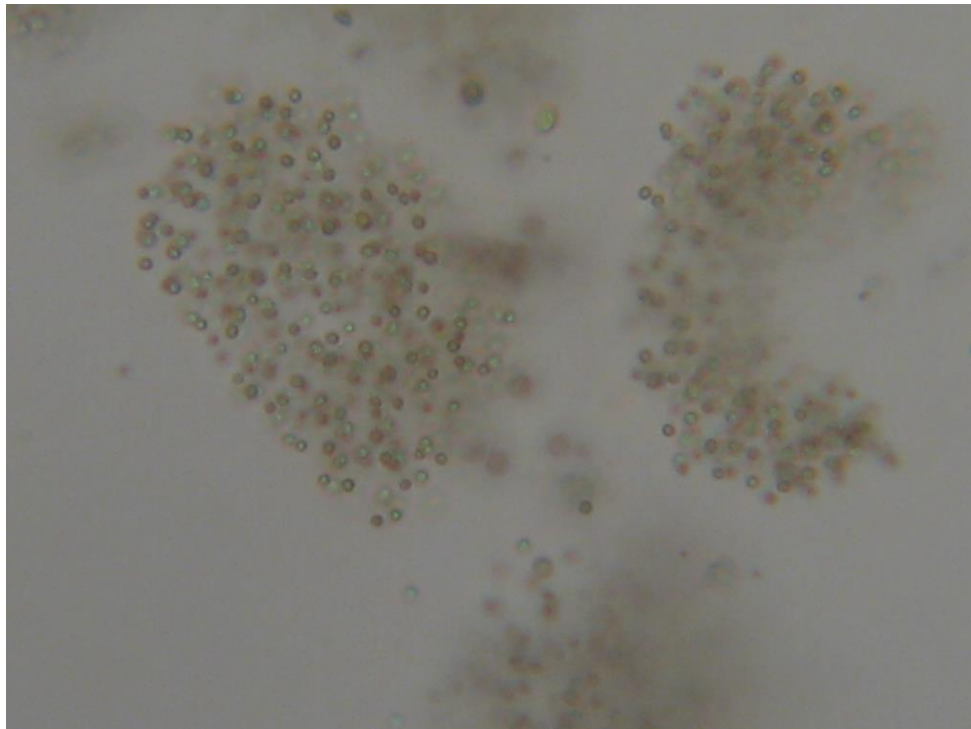


Fig. 19: *Microcystis elachista* (West & G.S.West) Starmach, 25 x
Marzo, 2014

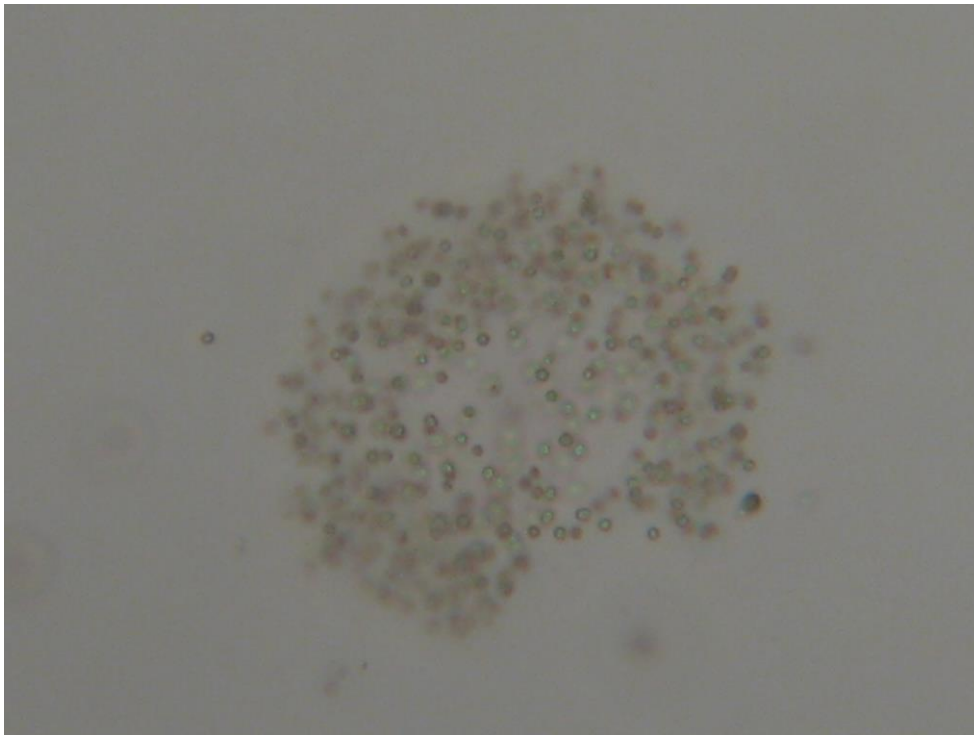


Fig. 20: *Microcystis elachista* (West & G.S.West) Starmach, 25 x
Marzo, 2014

CLASE BACILLARIOPHYCEAE



Fig. 21: *Aulacoseira granulata* (Ehrenberg) Simonsen, 25x
Marzo, 2014

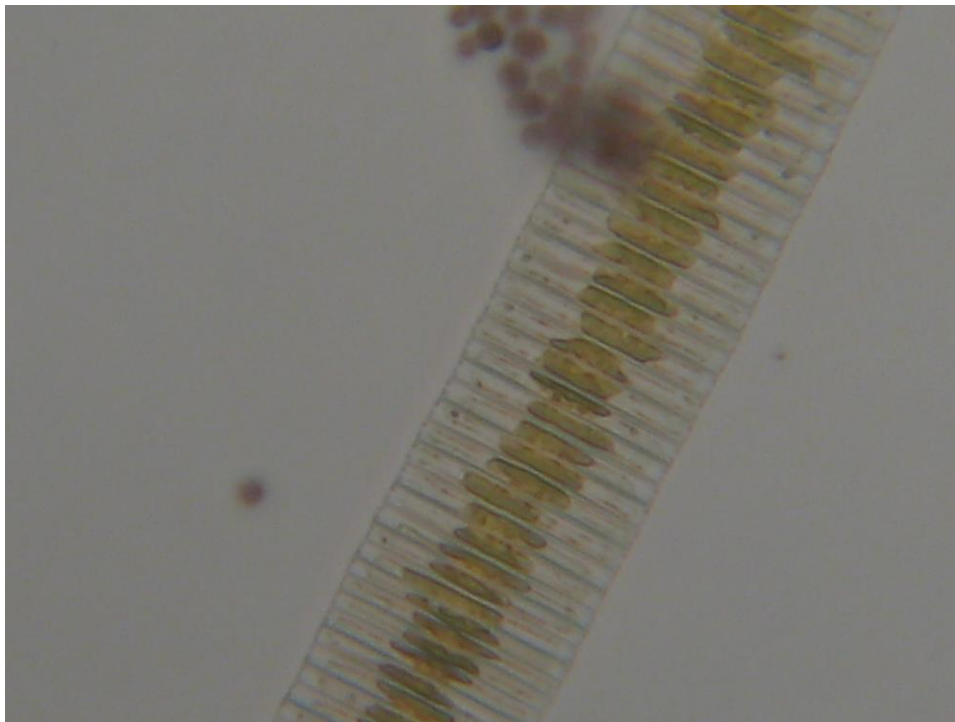


Fig. 22: *Fragilaria* sp., 25x
Marzo, 2014



Fig. 23: *Fragilaria ulna* (Nitzsch) Lange-Bertalot, 25x
Marzo, 2014

CLASE EUGLENOPHYCEAE

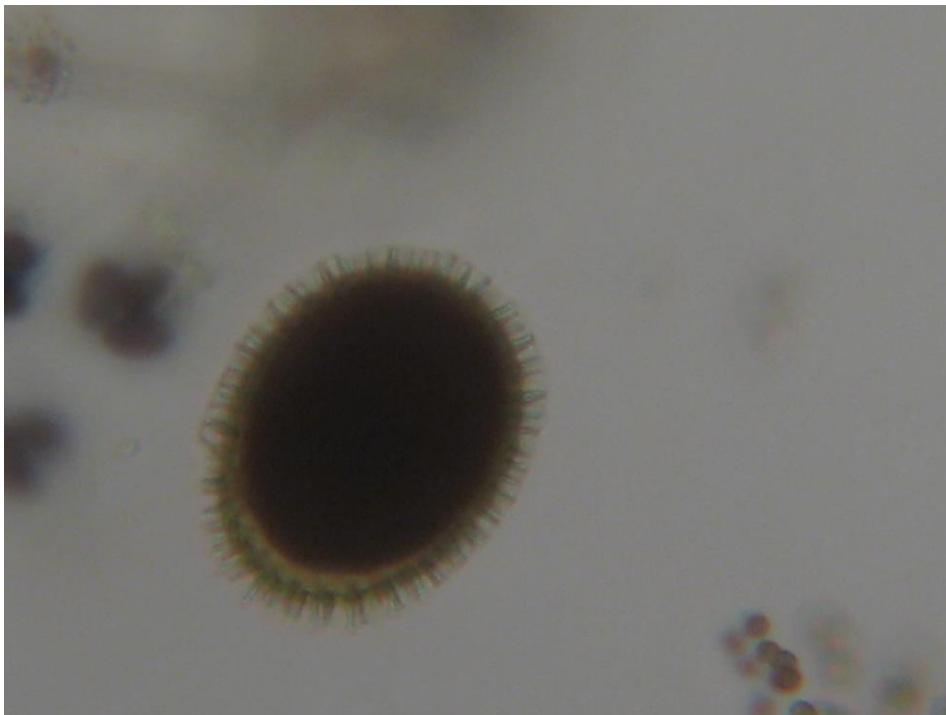


Fig. 24: *Trachelomonas* sp., 25x
Marzo, 2014

CLASE DINOPHYCEAE

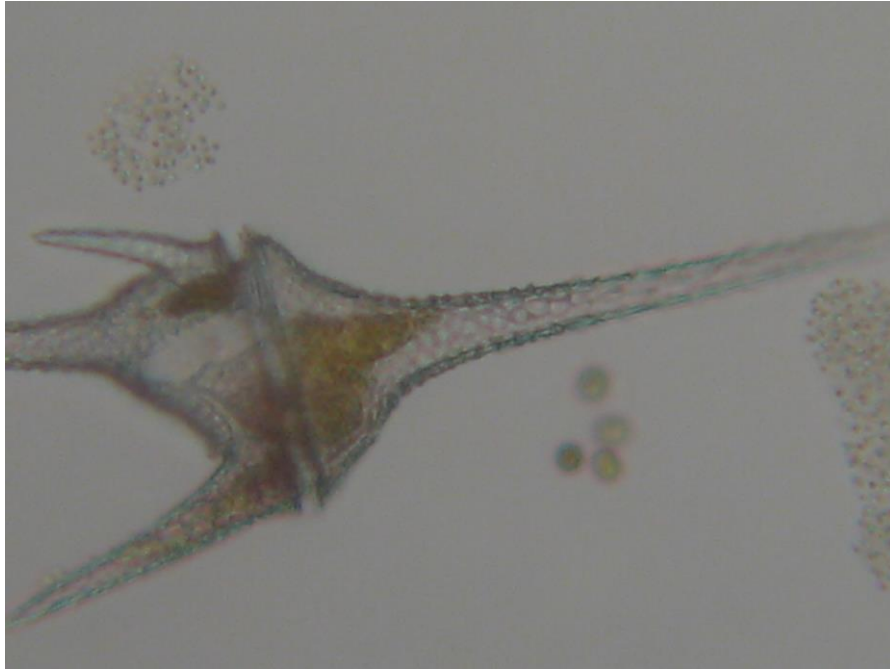


Fig. 25: *Ceratium hirundinella* (O.F.Müller) Dujardin, 25x
Marzo, 2014

CLASE CHLOROPHYCEAE

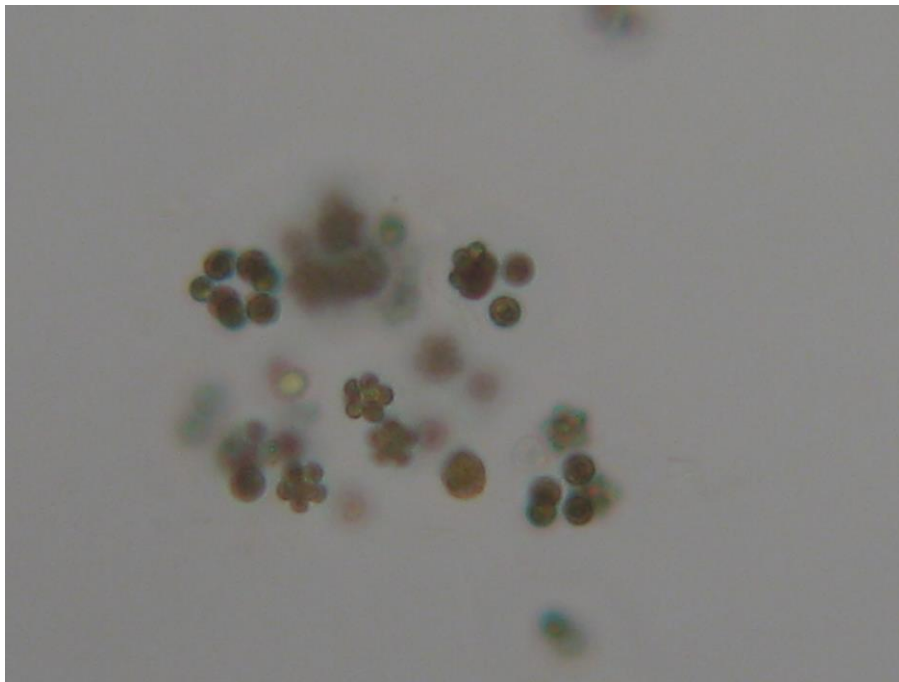


Fig. 26: *Sphaerocystis schroeteri* Chodat, 25x
Marzo, 2014

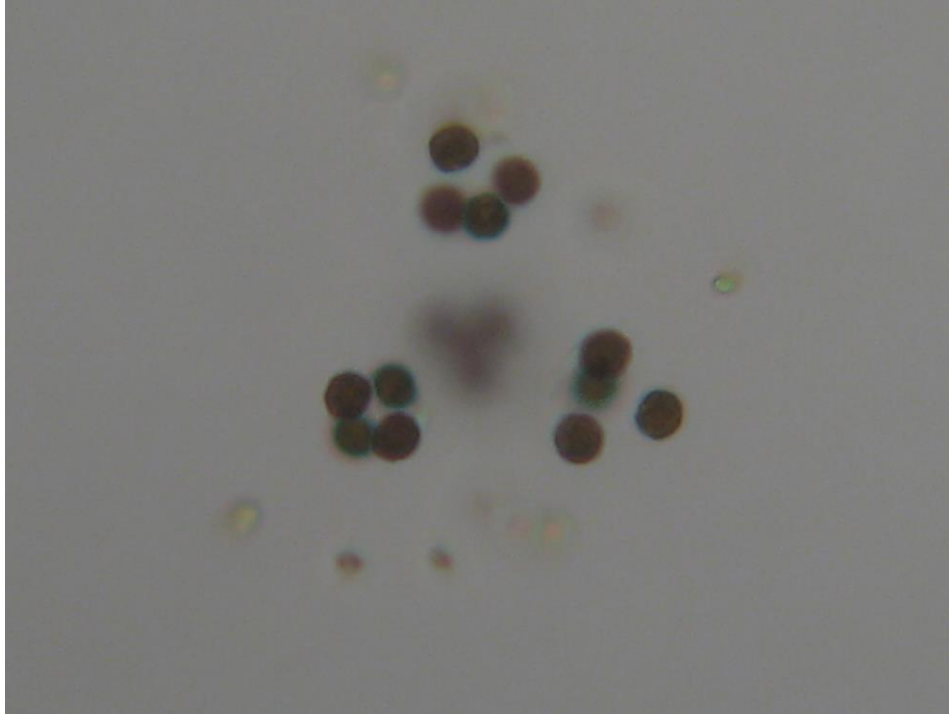


Fig. 27: *Eudorina elegans* Ehrenberg, 25x
Marzo, 2014

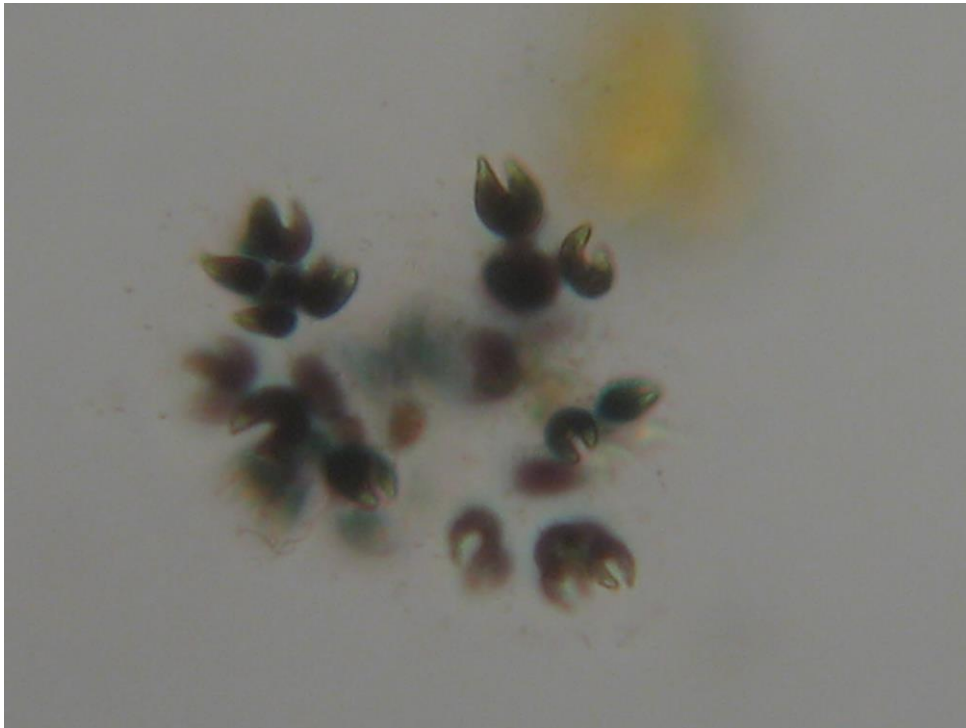


Fig. 28: *Kirchneriella obesa* (West) West & G.S. West, 25x
Marzo, 2014

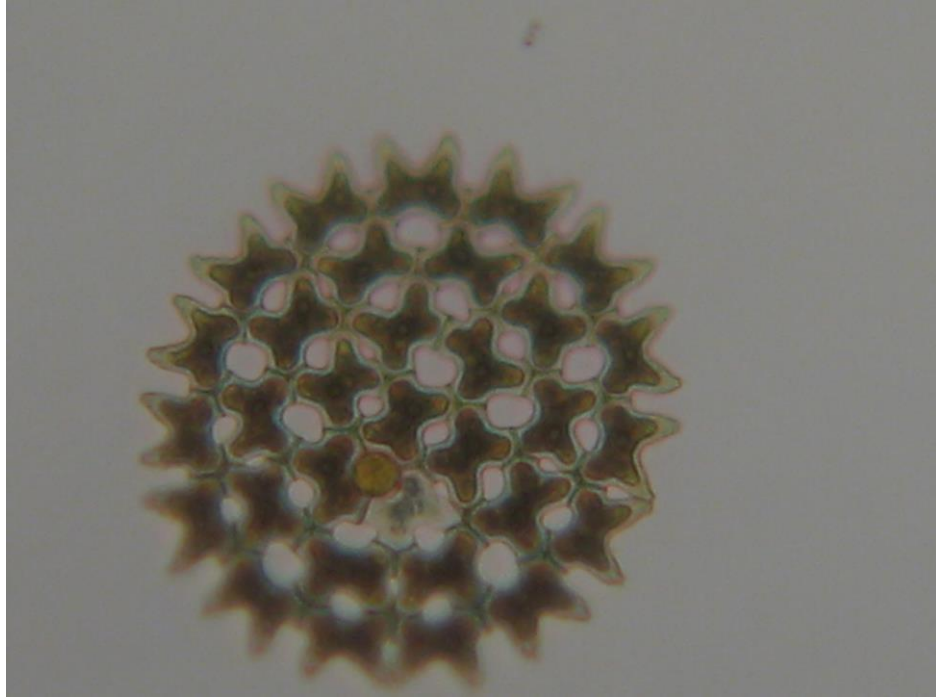


Fig. 29: *Pediastrum duplex* Meyen, 16x
Marzo, 2014

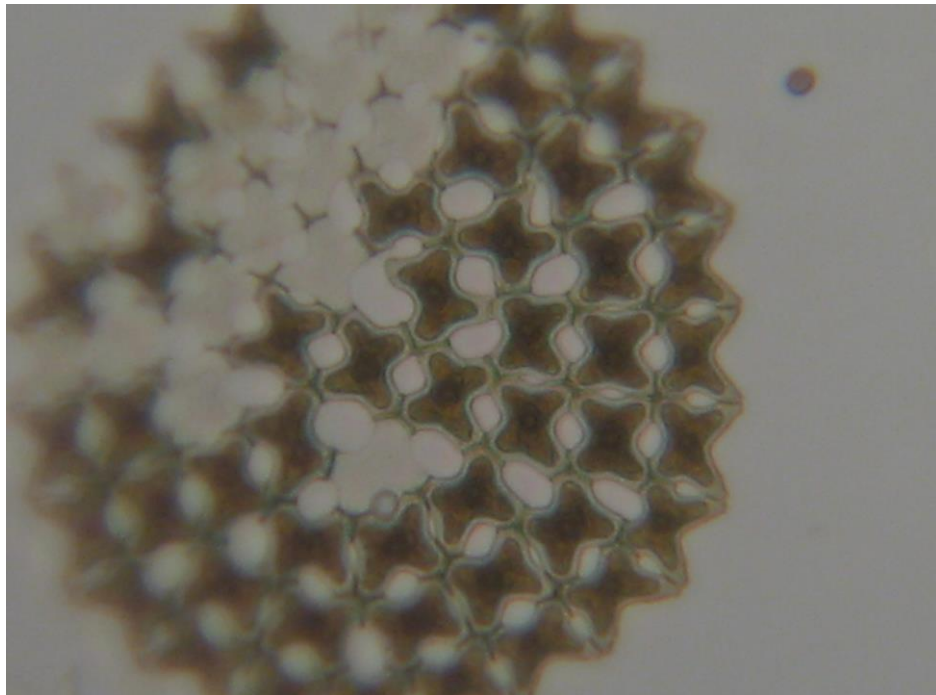


Fig. 30: *Pediastrum duplex* Meyen, 25x
Marzo, 2014

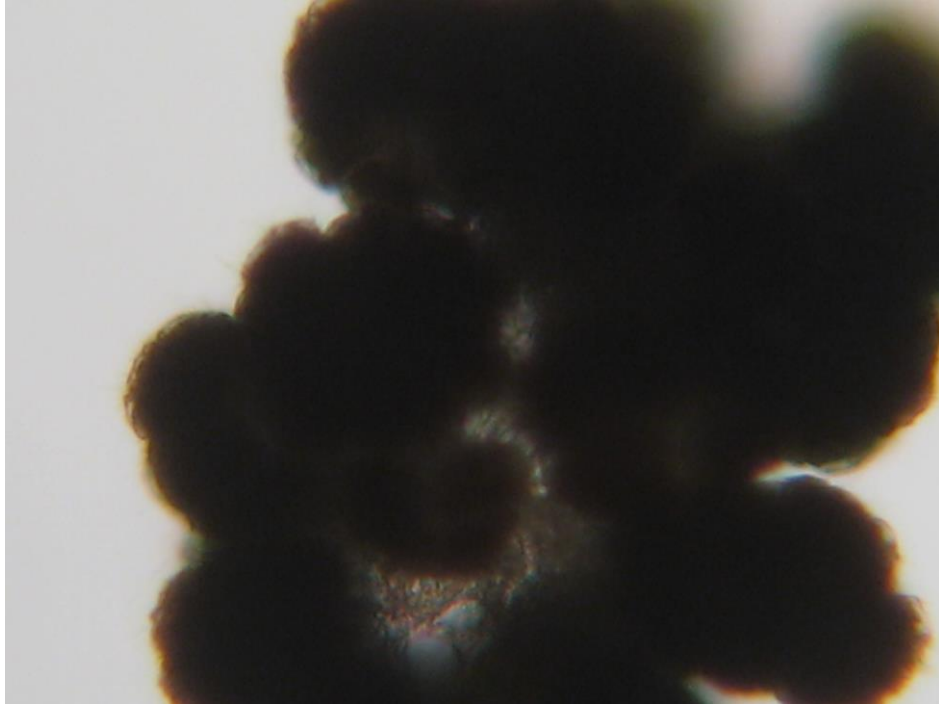


Fig. 31: *Botryococcus braunii* Kützing, 25x
Marzo, 2014

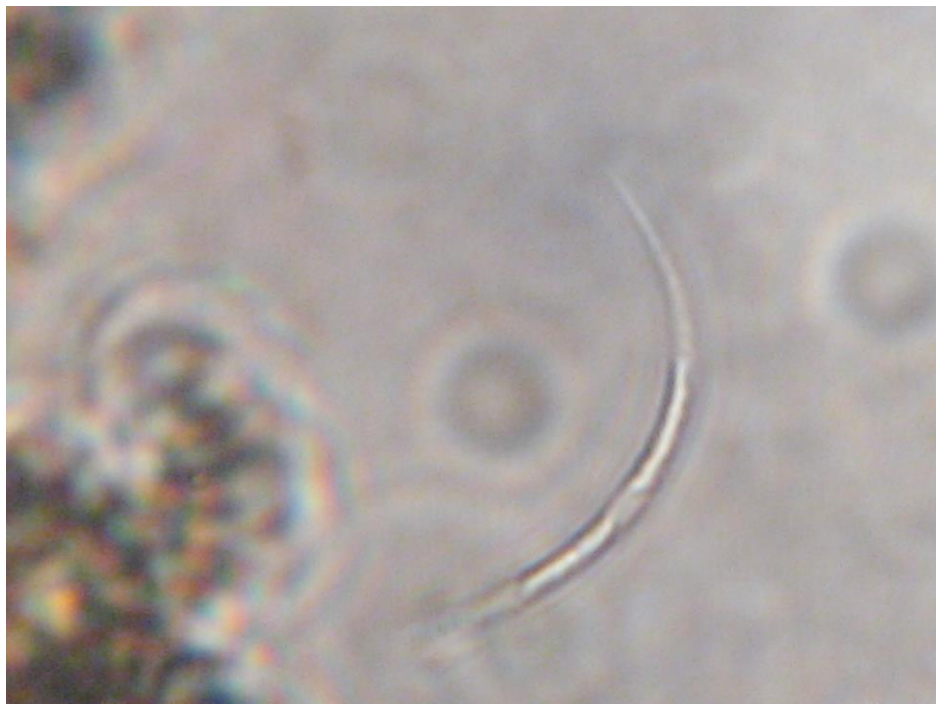


Fig. 32: *Closterium acutum* Brébisson, 25x
Marzo, 2014

LAGO LANALHUE

CYANOPHYCEAE



Fig. 33: *Anabaena spiroides* Klebahn, 25x
Marzo 2014

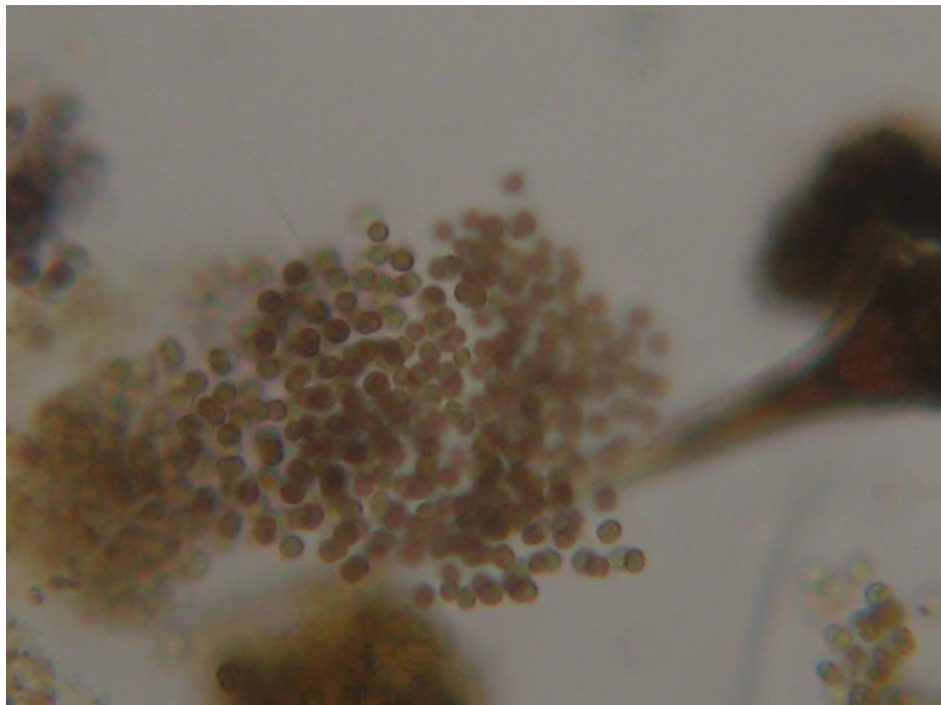


Fig. 34: *Microcystis aeruginosa* (Kützing) Kützing
Marzo 2014

BACILLARIOPHYCEAE



Fig. 35: *Aulacoseira granulata* (Ehrenberg) Simonsen, 25X
Marzo, 2014

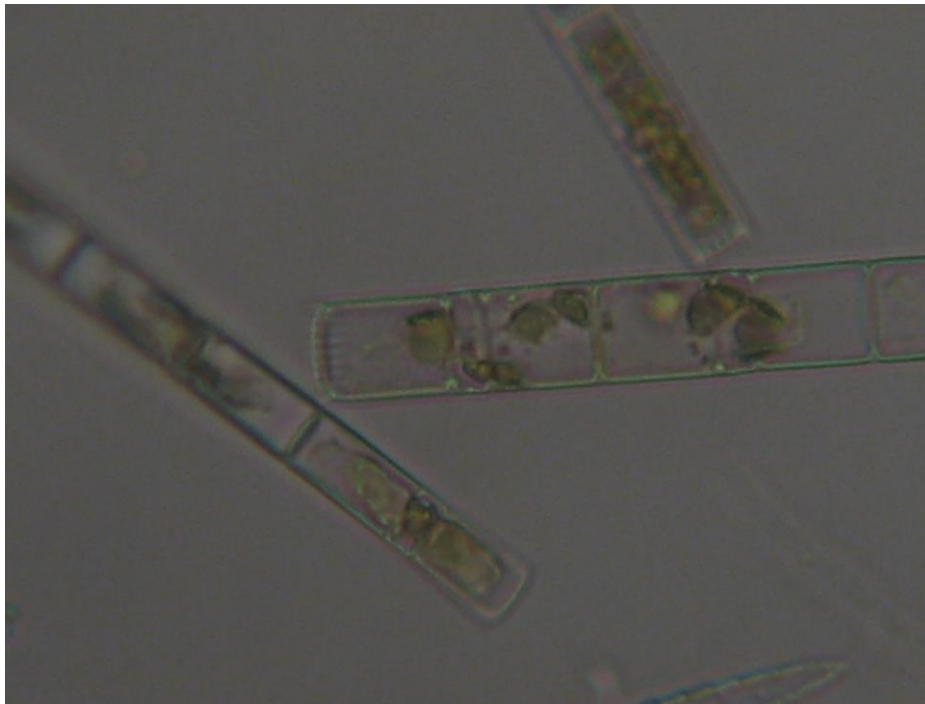


Fig. 36: *Melosira ambigua* (Grunow) Simonsen, 40x
Marzo, 2014



Fig. 37: *Melosira ambigua* (Grunow) Simonsen, 40x
Marzo, 2014

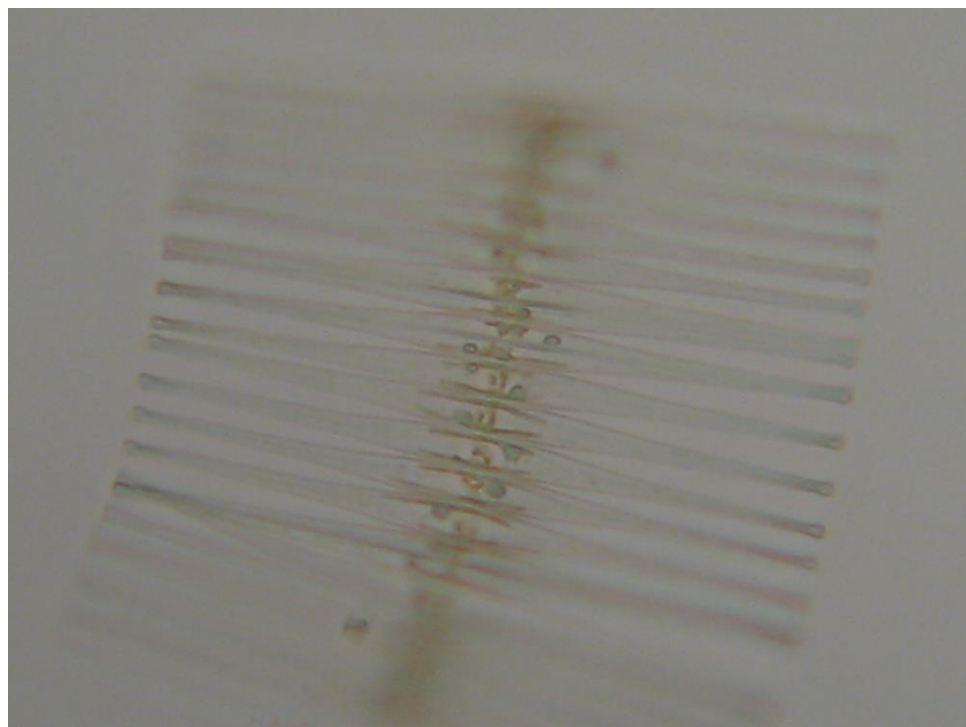


Fig. 38: *Fragilaria crotonensis* Kitton, 25x
Marzo, 2014

CHRYSOPHYCEAE

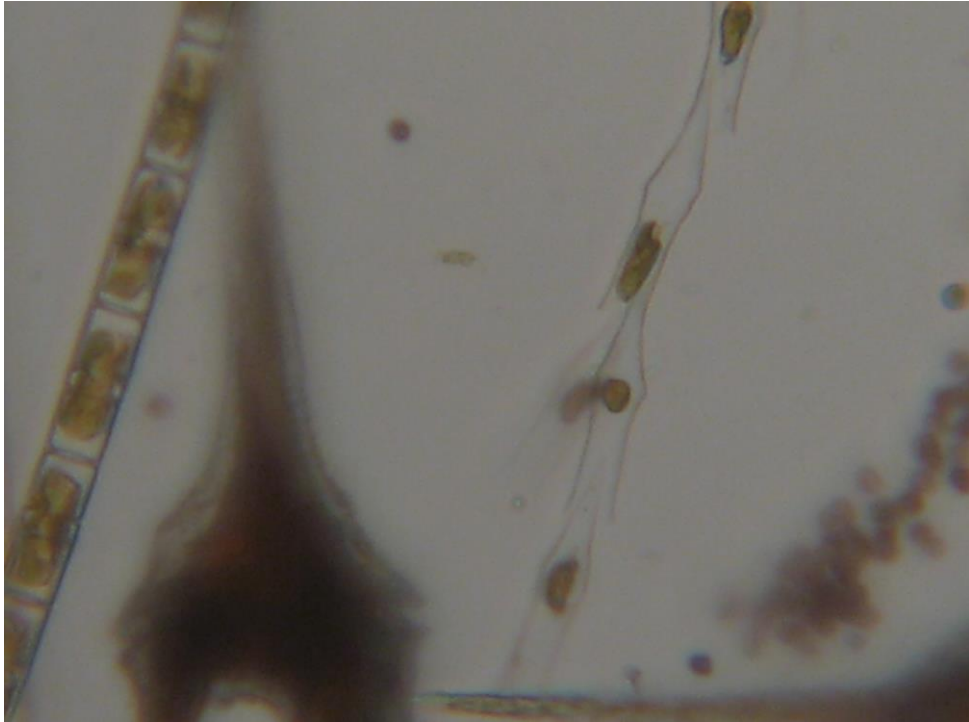


Fig. 39: *Dinobryon divergens* Imhof, 25x
Marzo, 2014

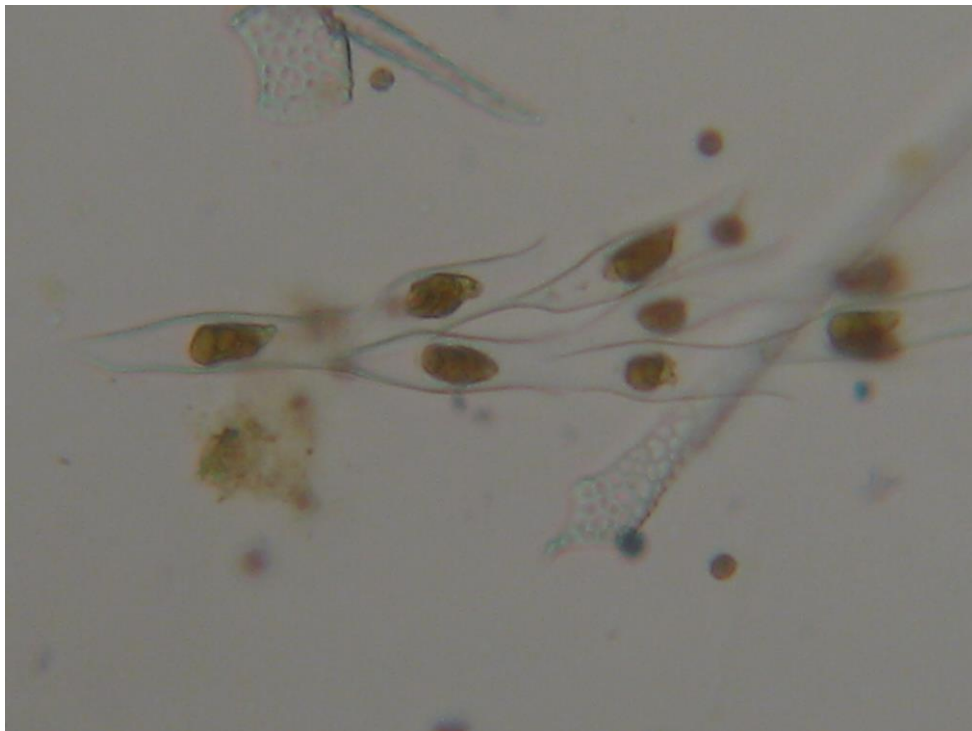


Fig. 40: *Dinobryon divergens* Imhof, 25x
Marzo, 2014

DINOPHYCEAE

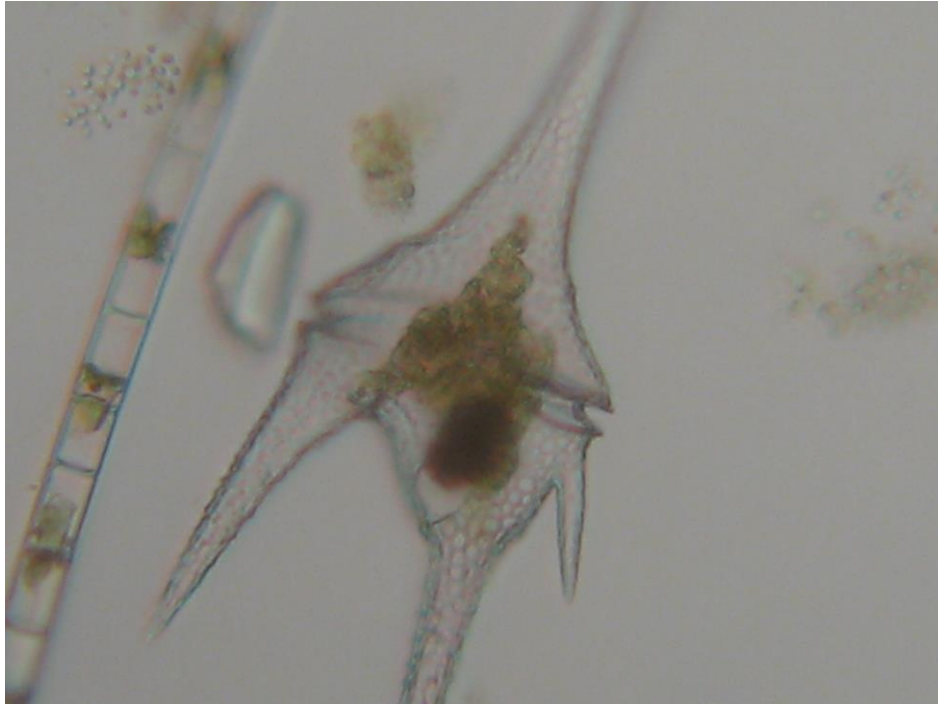


Fig. 41: *Ceratium hirundinella* (O.F.Müller) Dujardin, 25x
Marzo, 2014

CHLOROPHYCEAE

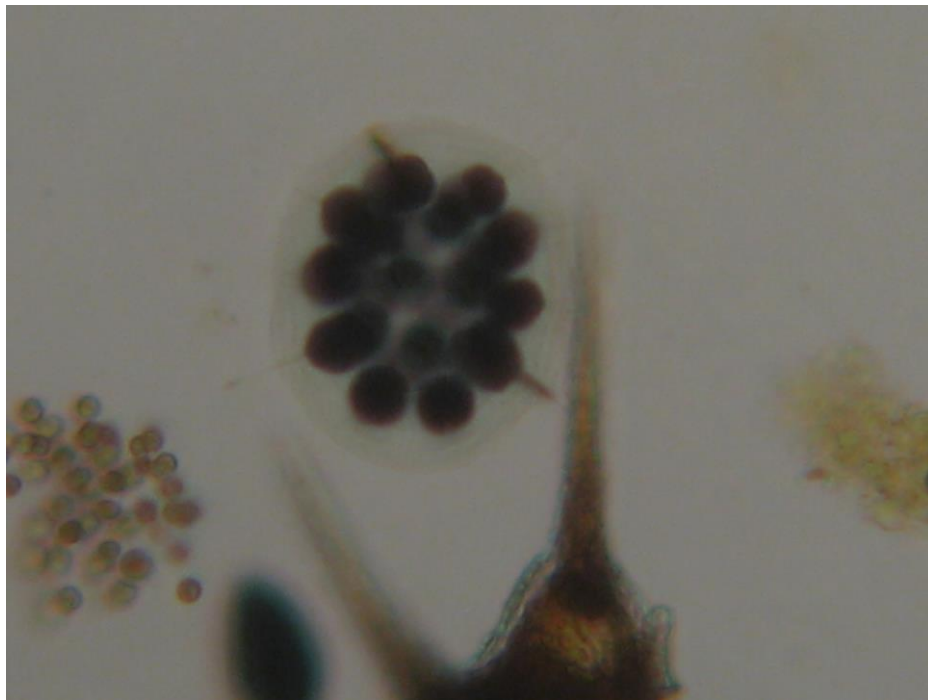


Fig. 42: *Eudorina elegans* Ehrenberg, 25x
Marzo 2014

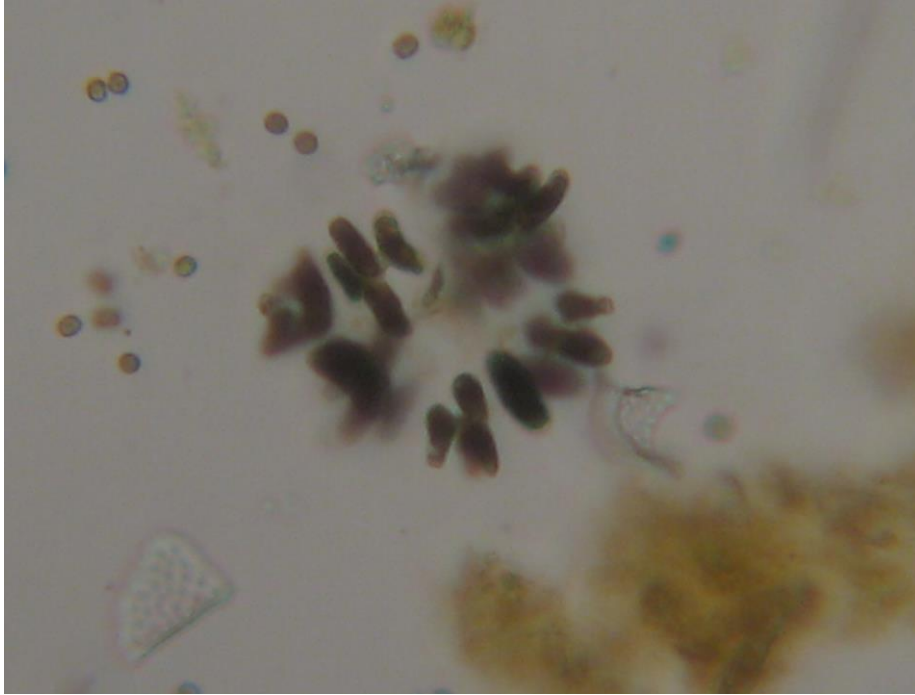


Fig. 43: *Dimorphococcus lunatus* A Braun, 40x
Marzo, 2014

LAGO COLICO

CLASE BACILLARYOPHYCEAE



Fig. 44: *Aulacoseira granulata* (Ehrenberg) Simonsen, 25x
Noviembre, 2013

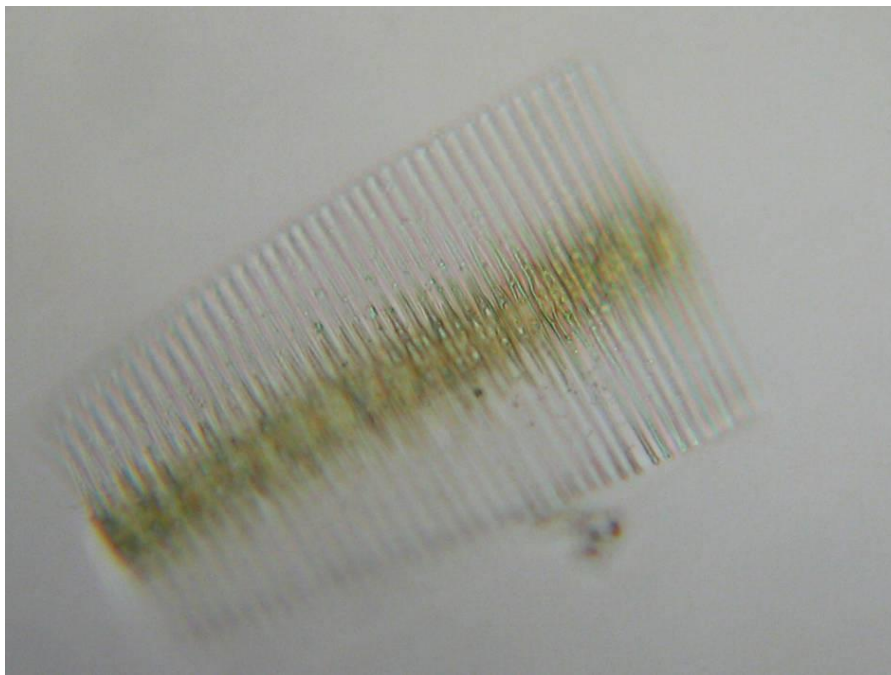


Fig. 45: *Fragilaria crotonensis* Kitton, 40x
Noviembre, 2013

CLASE CHLOROPHYCEAE

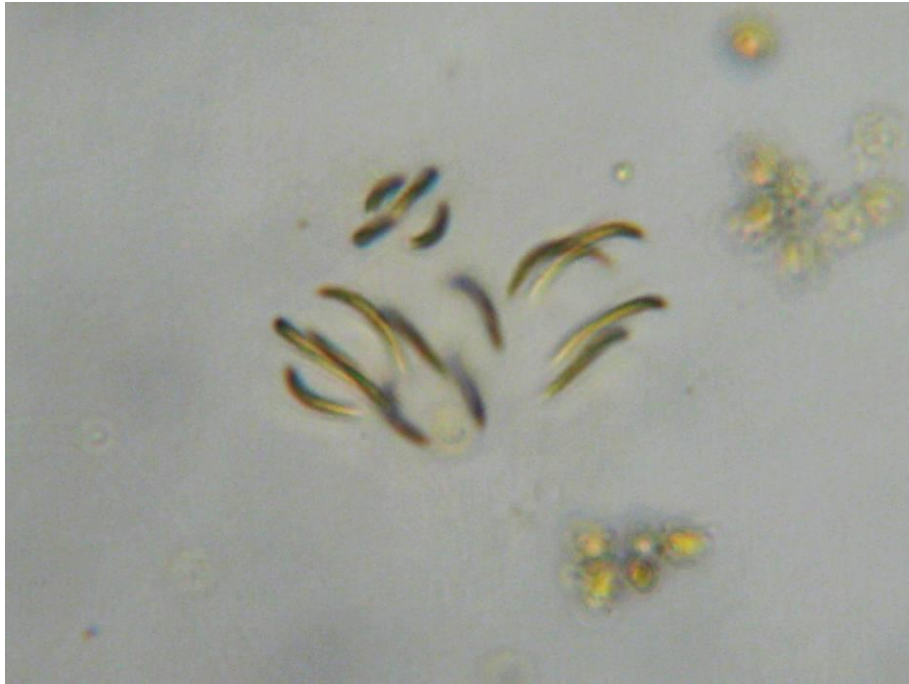


Fig. 46: *Quadrigula closterioides* (Bohlin) Printz, 40x
Noviembre, 2013

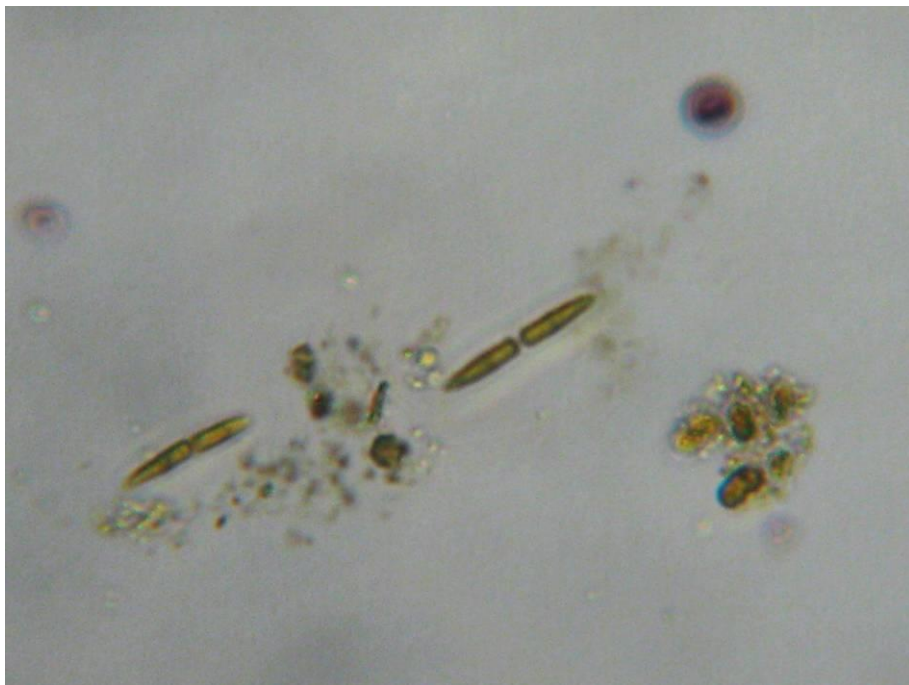


Fig. 47: *Elakatothrix gelatinosa* Wille, 40x
Noviembre, 2013

LAGO VILLARRICA
CLASE CYANOPHYCEAE



Fig. 48: *Anabaena spiroides* Klebahn, 25x
Febrero, 2013



Fig. 49: *Anabaena spiroides* Klebahn, 25x
Acompañado de *Ceratium hirundinella*(O.F.Müller) Dujardin
Febrero, 2013

CLASE BACILLARYOPHYCEAE

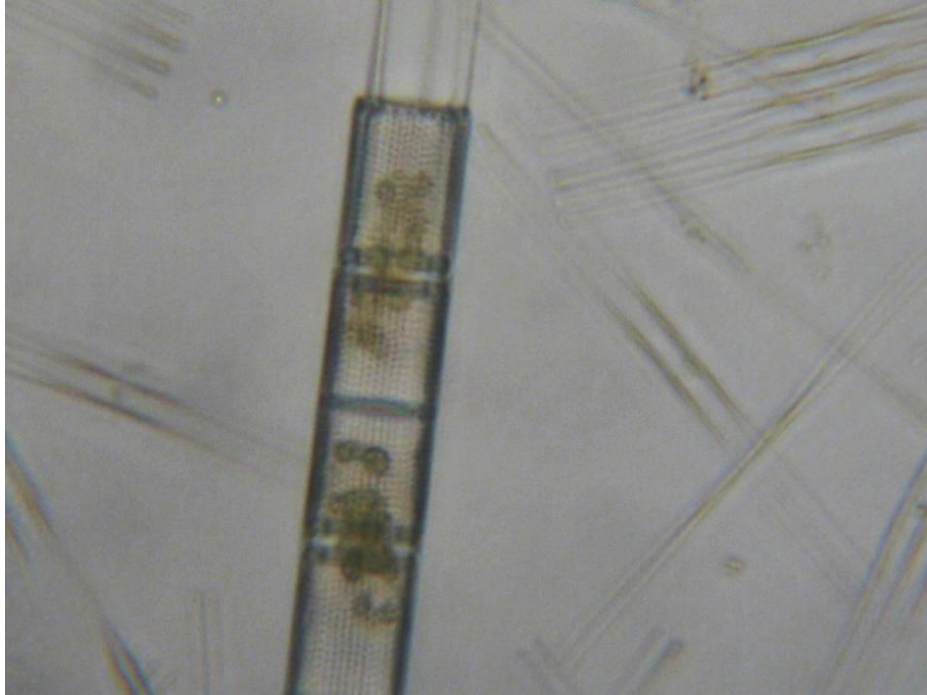


Fig. 50: *Aulacoseira granulata* (Ehrenberg) Simonsen, 40x
Noviembre, 2013

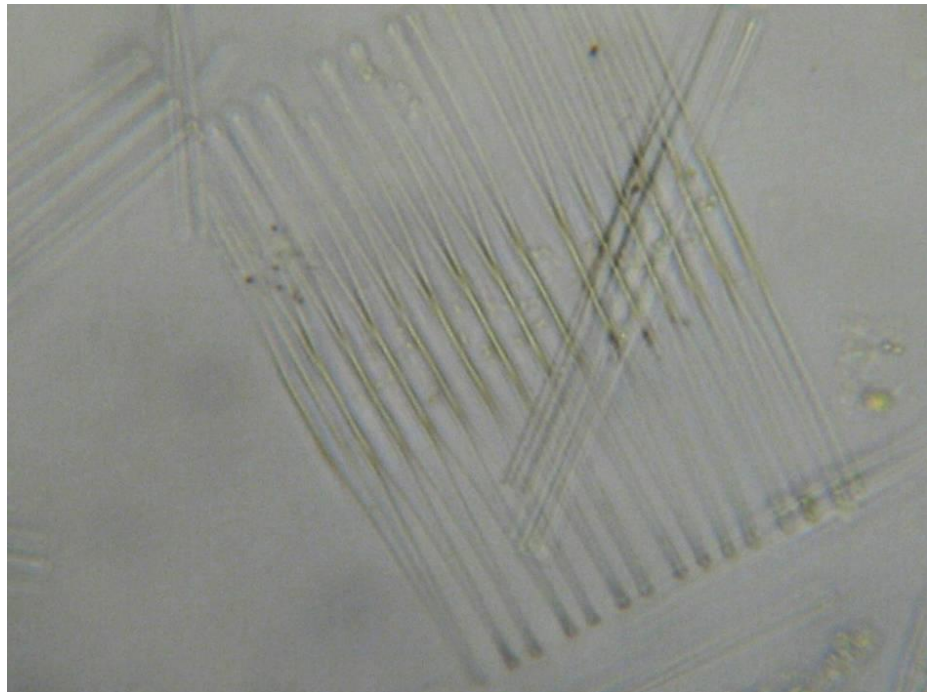


Fig. 51: *Fragilaria crotonensis* Kitton, 40x
Noviembre, 2013

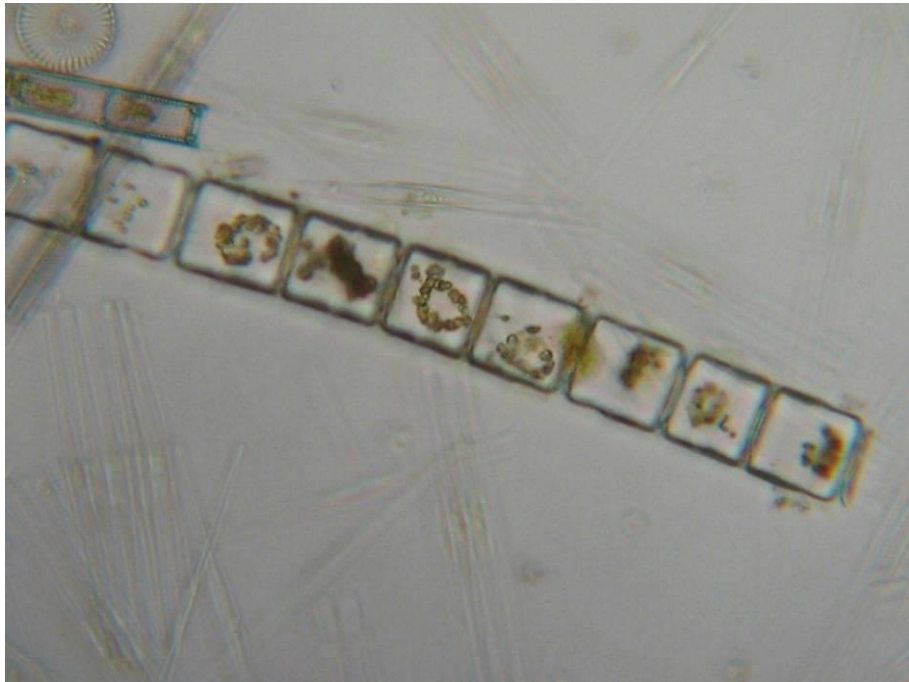


Fig. 52: *Melosira varians* C.Agardh, 25x
Noviembre, 2013

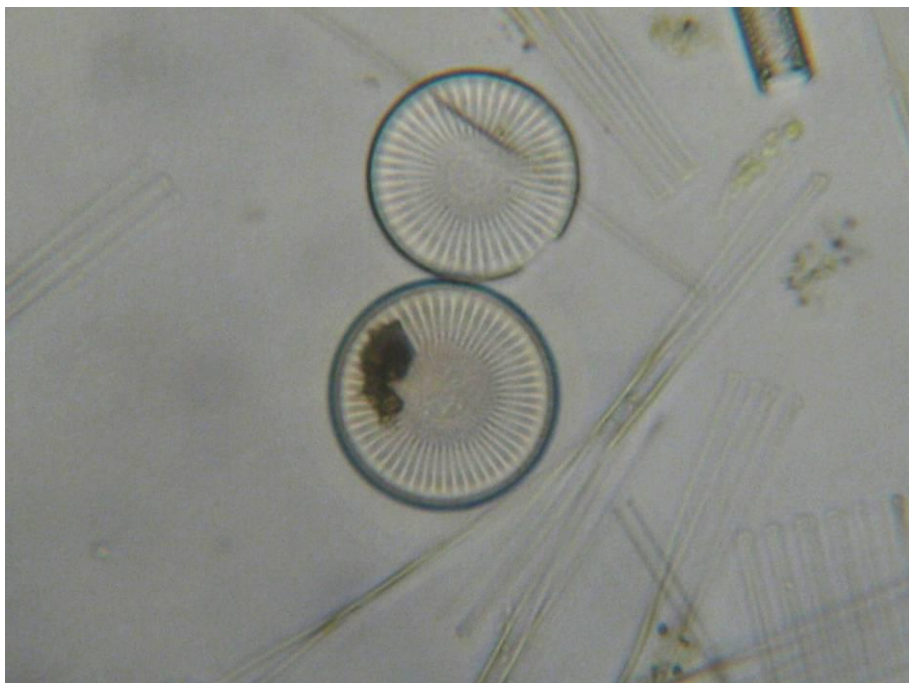


Fig. 53: *Cyclotella operculata* (C.Agardh) Brébisson, 25X
Noviembre 2013

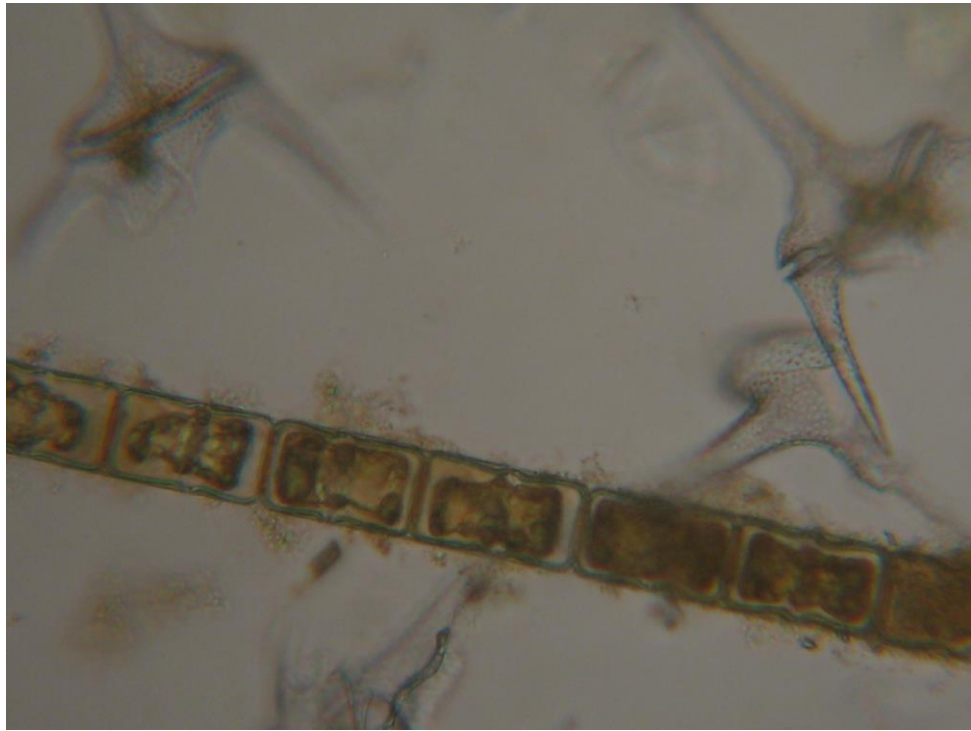


Fig. 54: *Melosira hustedtii* G.Krasske, 25x
Febrero, 2014

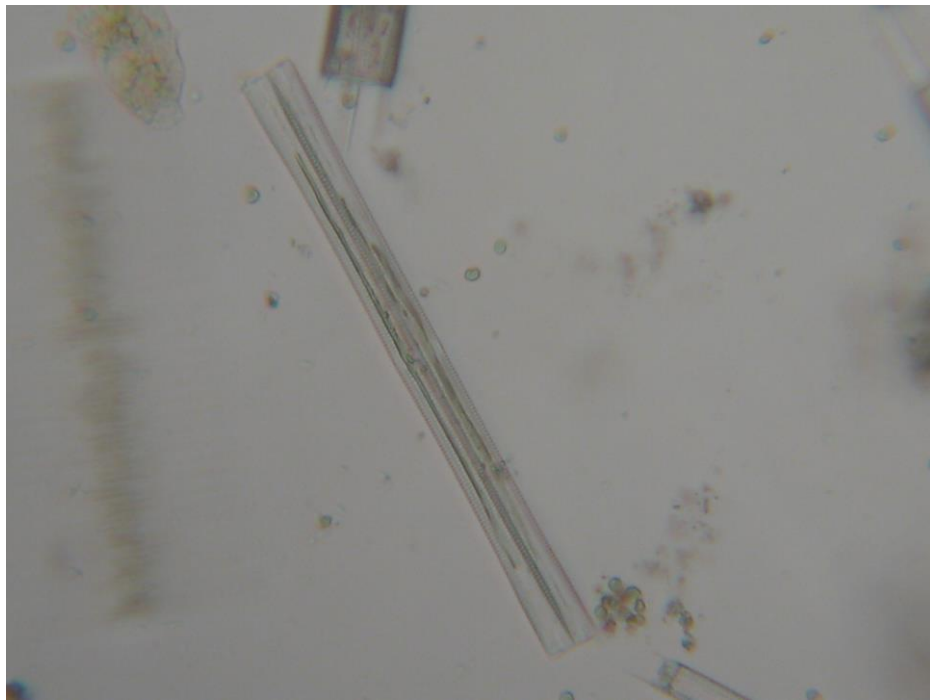


Fig. 55: *Fragilaria ulna* (Nitzsch) Lange-Bertalot, 16X
Febrero, 2014

CLASE DINOPHYCEAE

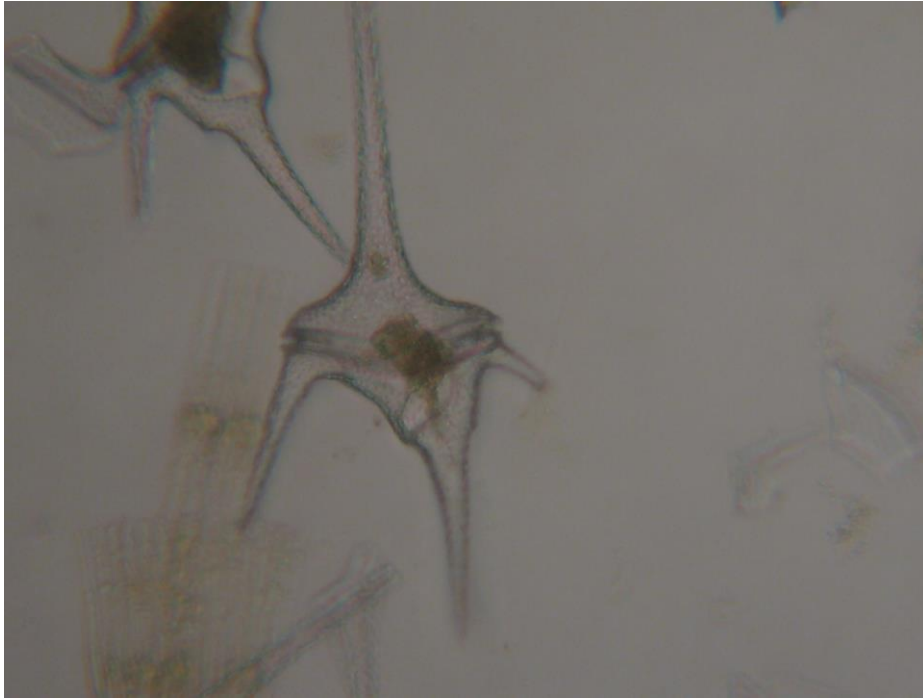


Fig. 56: *Ceratium hirundinella* (O.F.Müller) Dujardin, 25x
Febrero, 2014

CLASE XANTHOPHYCEAE

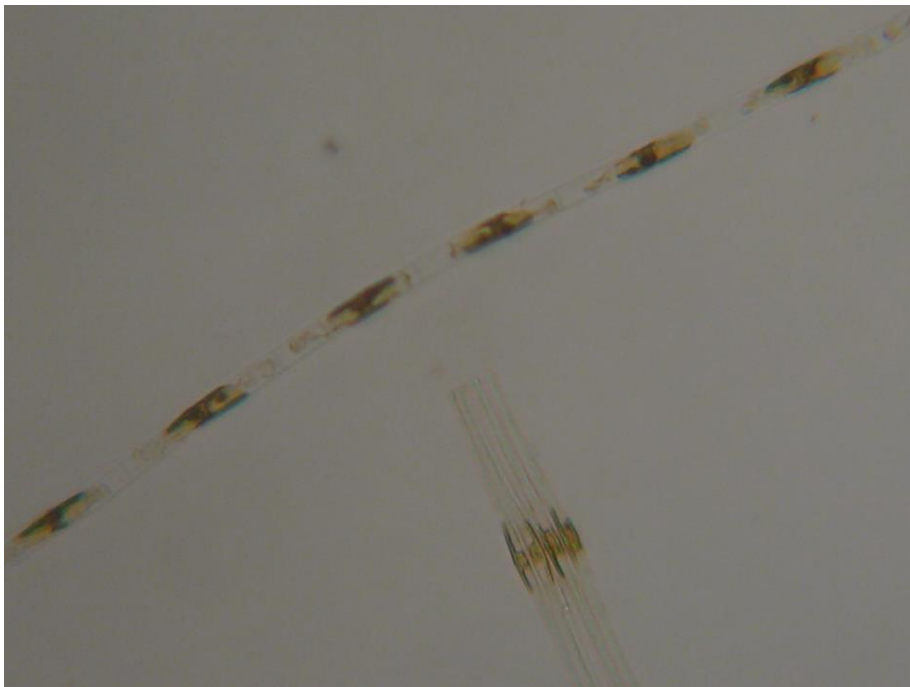


Fig. 57: *Tribonema elongatum* Thomasson, 25X
Febrero, 2014

CLASE CHLOROPHYCEAE

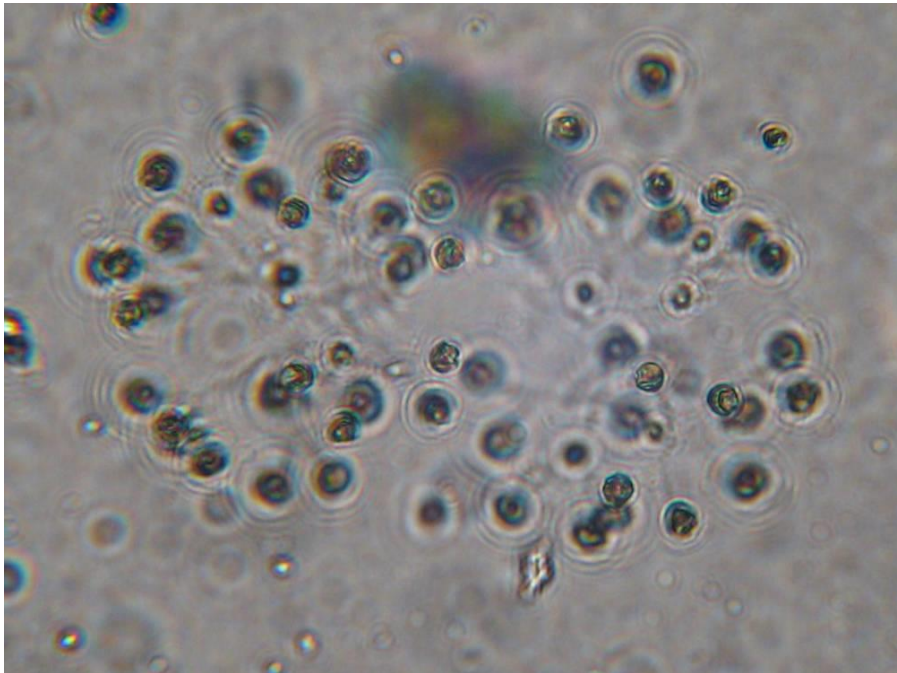


Fig. 58: *Dictyosphaerium pulchellum* H.C.Wood, 40x
Noviembre 2013

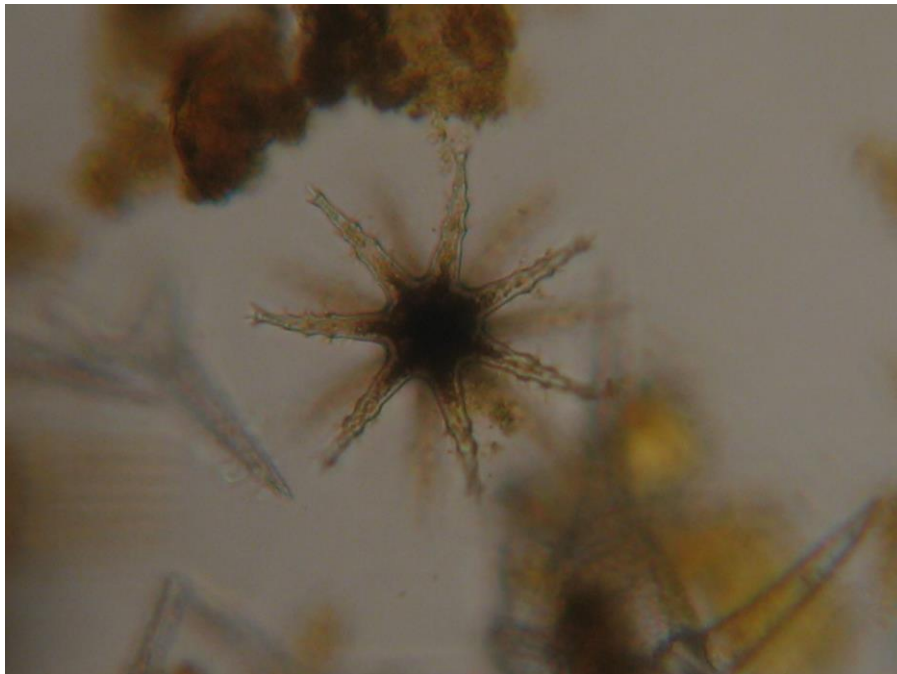


Fig. 59: *Staurastrum rotula* Nordstedt, 25x
Febrero, 2014

LAGO RANCO

CLASE BACILLARYOPHYCEAE

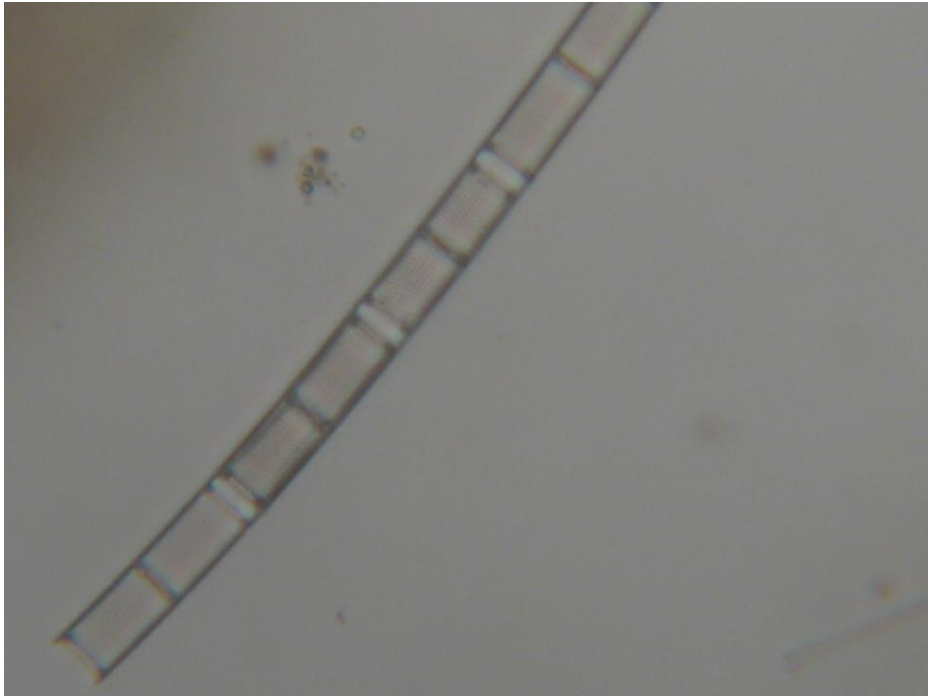


Fig. 60: *Aulacoseira granulata* (Ehrenberg) Simonsen, 16X
Febrero, 2014

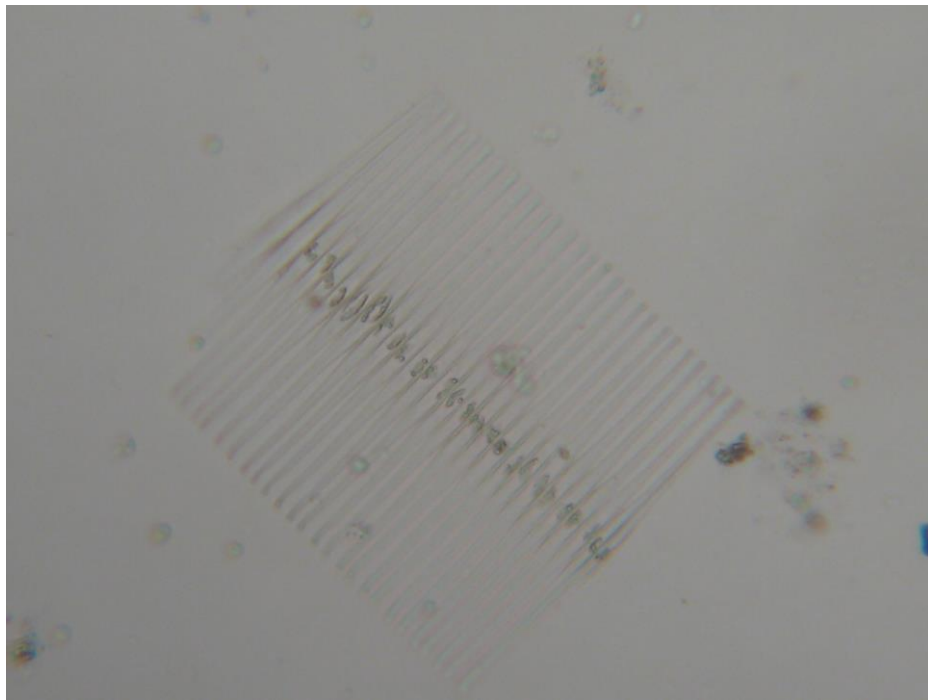


Fig. 61: *Fragilaria crotonensis* Kitton, 25x
Diciembre, 2013

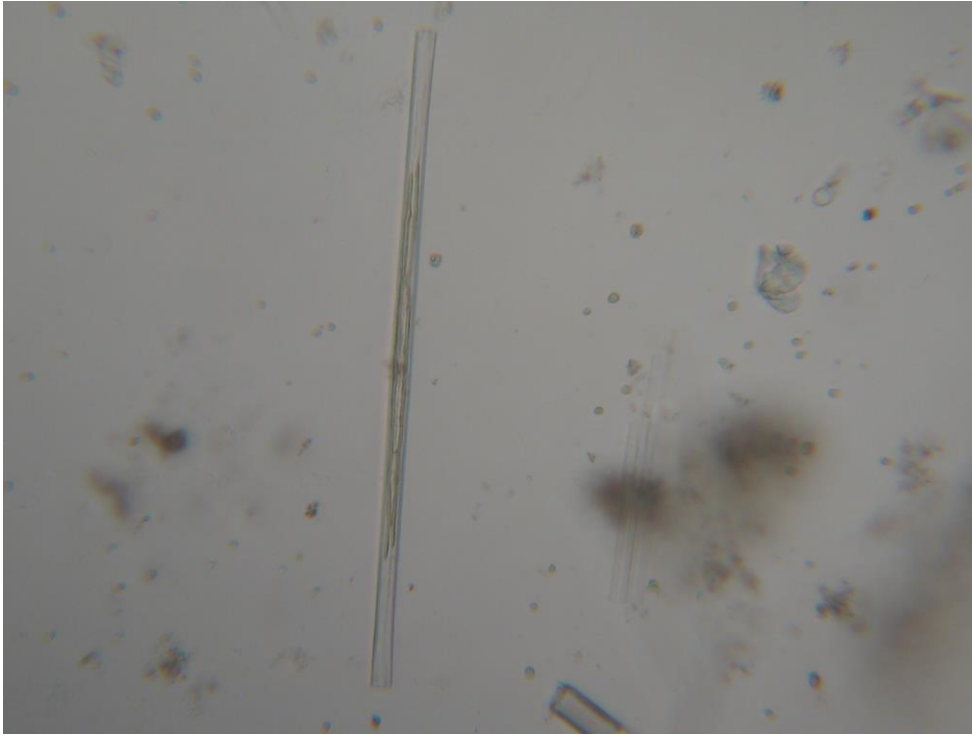


Fig. 62: *Fragilaria ulna* (Nitzsch) Lange-Bertalot, 16X
Febrero, 2014



Fig. 63: *Cymbella lanceolata* (C.Agardh) Kirchner, 25X
Febrero, 2014



Fig. 64: *Rhopalodia gibba*, (Ehrenberg) Otto Müller, 16x
Diciembre, 2013

CLASE CHRYSOPHYCEAE



Fig. 65: *Dinobryon cylindricum* Imhof, 16 x
Febrero, 2014

CLASE CHLOROPHYCEAE



Fig. 66: *Eudorina elegans* Ehrenberg, 25x
Febrero, 2014

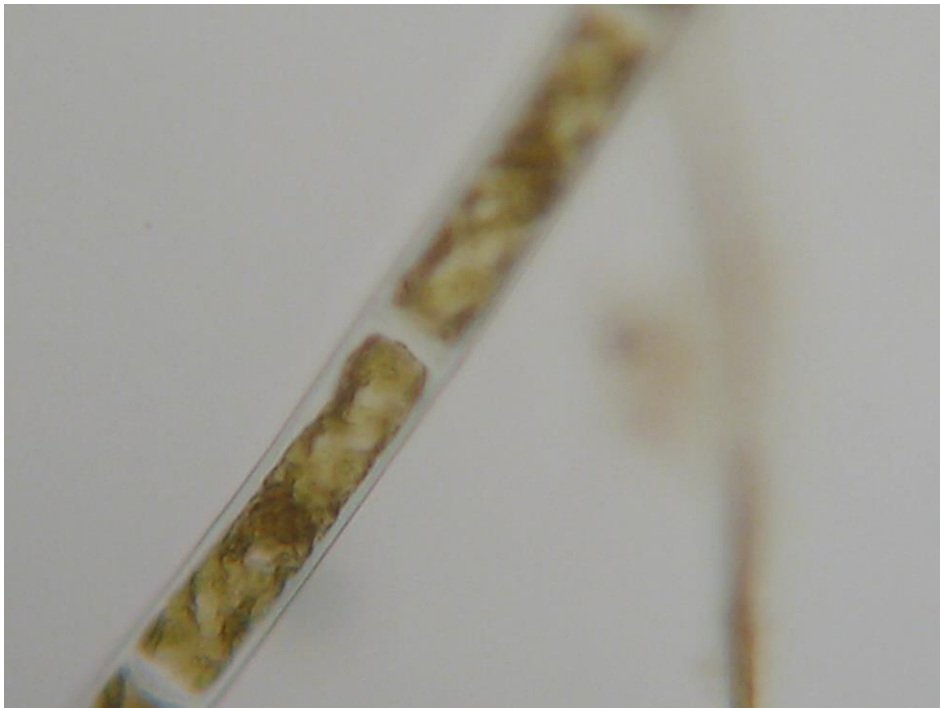


Fig. 67 *Spirogyra* sp., 16x
Febrero, 2014

LAGO PUYEHUE
CLASE BACILLARYOPHYCEAE

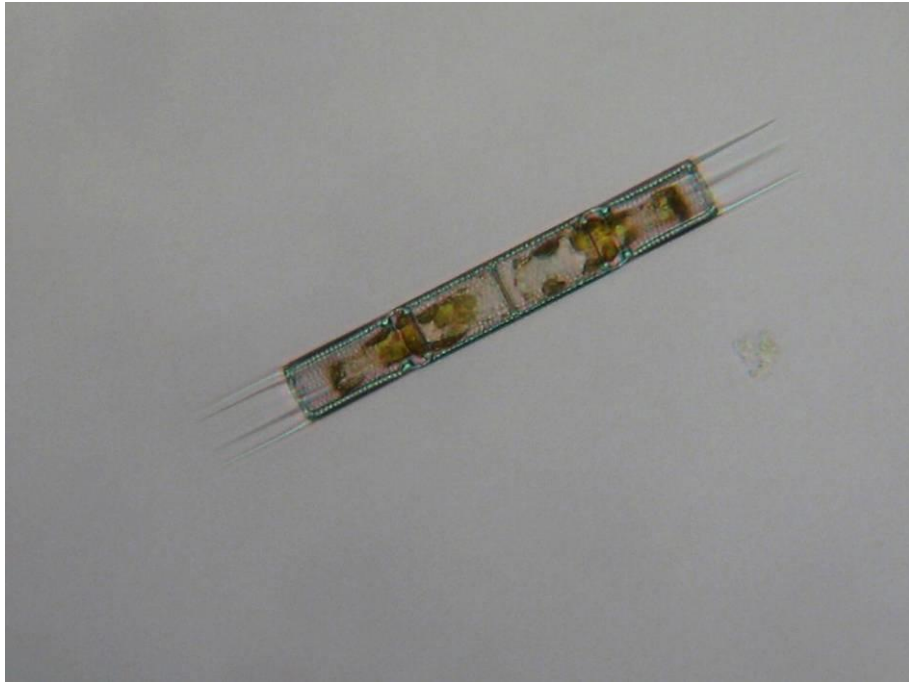


Fig. 68: *Aulacoseira granulata* (Ehrenberg) Simonsen, 40x
Octubre, 2013



Fig. 69: *Asterionella formosa* Hassall 25x
Octubre, 2013

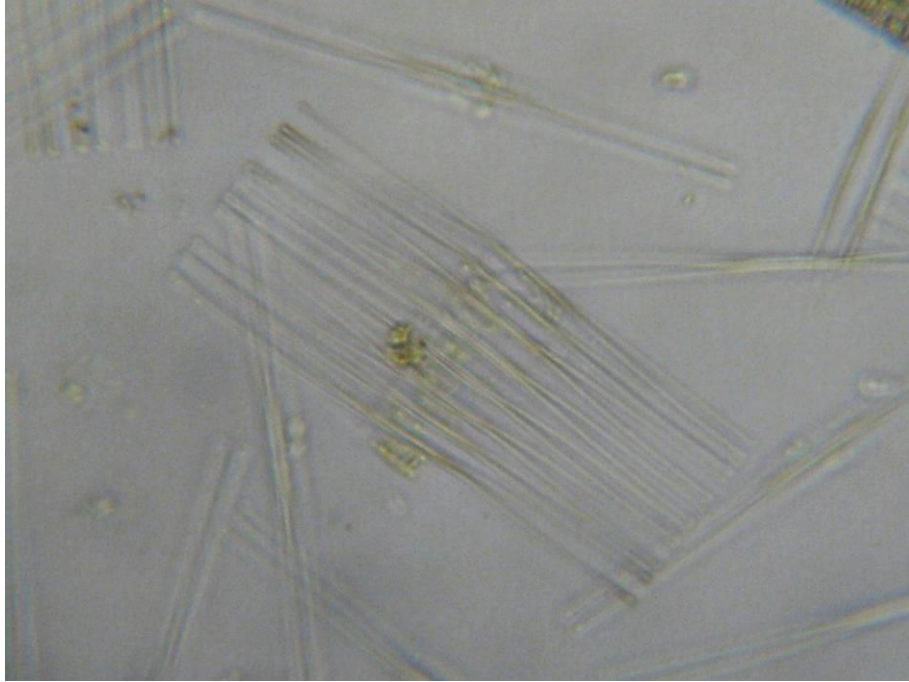


Fig. 70: *Fragilaria crotonensis* Kitton, 40x
Octubre, 2013

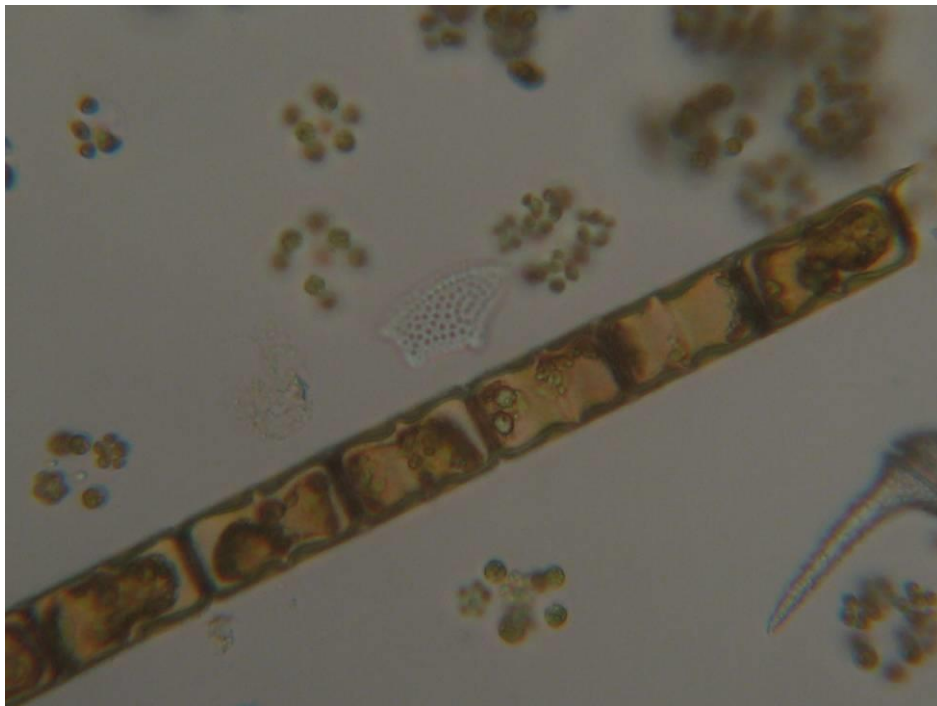


Fig. 71: *Melosira hustedtii* G.Krasske, 40X
Mayo 2013

CLASE DINOPHYCEAE



Fig. 72 : *Ceratium hirundinella* (Müller) Schrank, 25x
Mayo, 2013

CLASE CRYPTOPHYCEAE

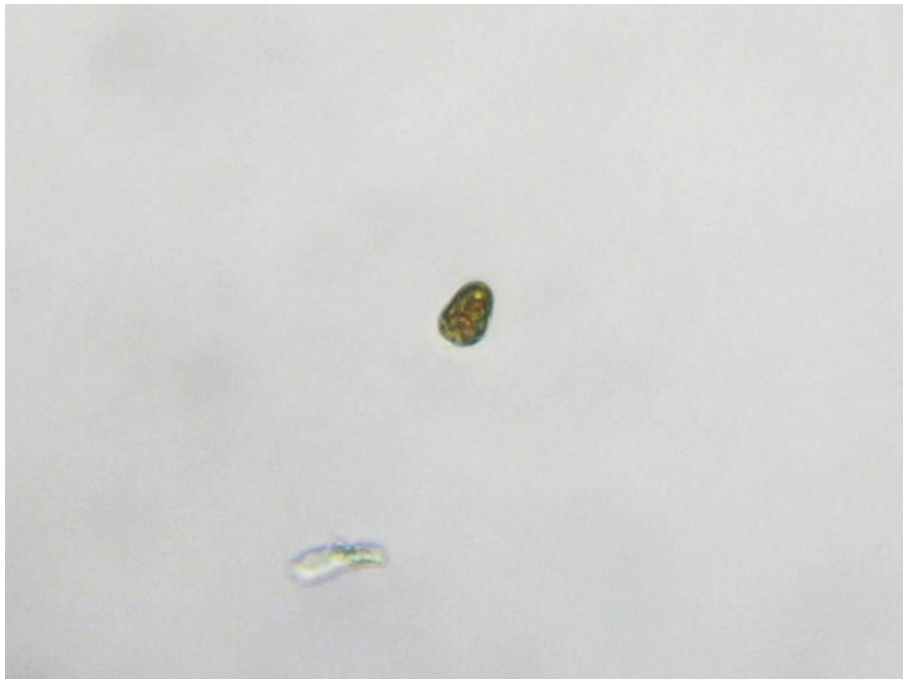


Fig. 73: *Rhodomonas lacustris* (Pascher & Ruttner) Javornicky 40X
Octubre, 2013

CLASE CHLOROPHYCEAE

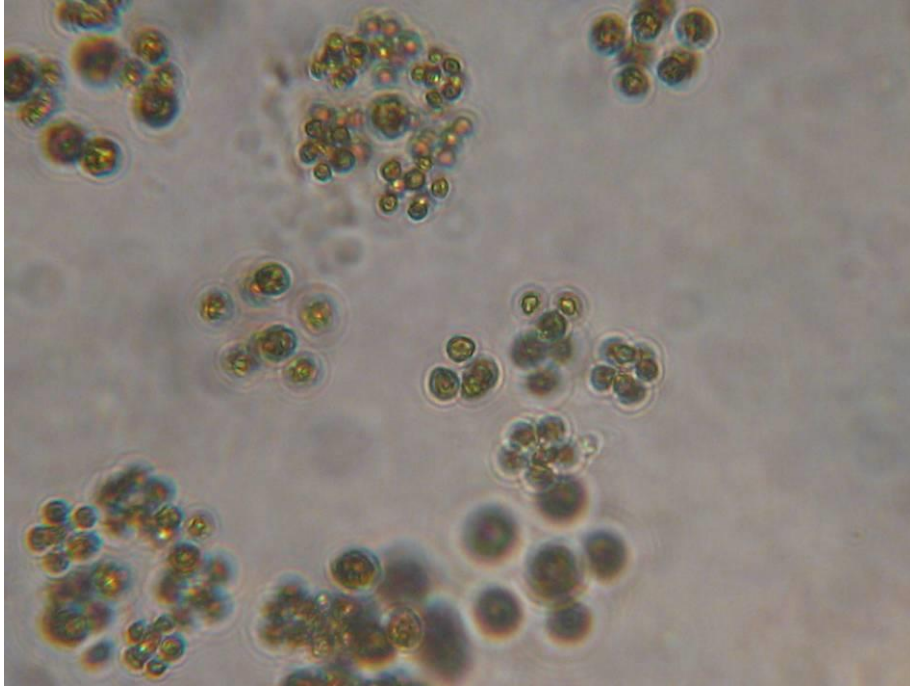


Fig. 74: *Sphaerocystis schroeteri* Chodat, 40x
Octubre 2013

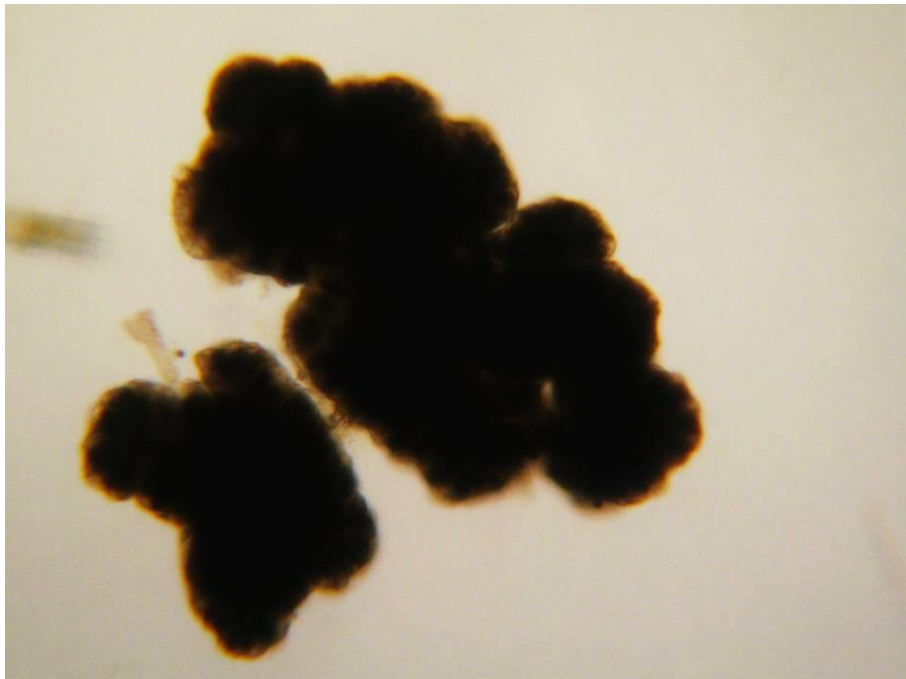


Fig.75: *Botryococcus braunii* Kützing, 25x
Octubre, 2013



Fig. 76: *Staurastrum planctonicum* Teiling, 25x
Abril, 2014

LAGO RUPANCO
CLASE BACILLARYOPHYCEAE

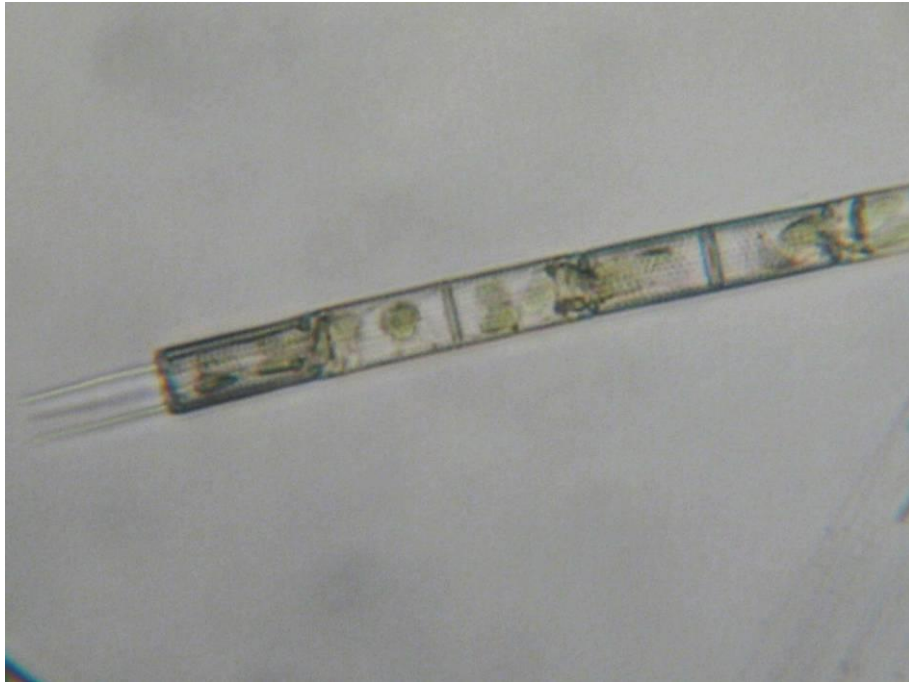


Fig. 77: *Aulacoseira granulata* (Ehrenberg) Simonsen, 40x
Octubre, 2013

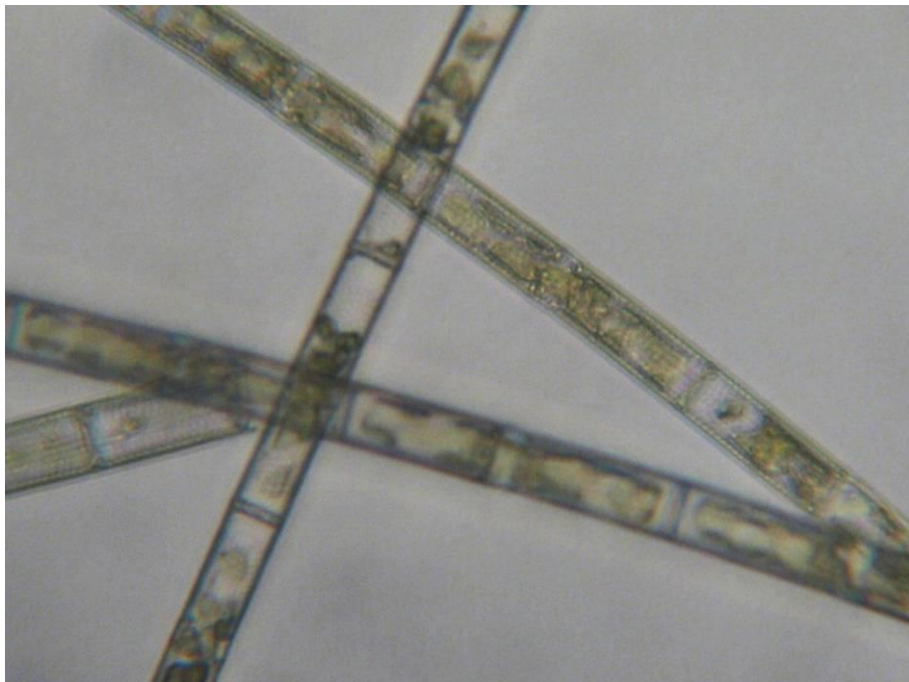


Fig. 78: *Aulacoseira granulata* (Ehrenberg) Simonsen 25x
Octubre, 2013

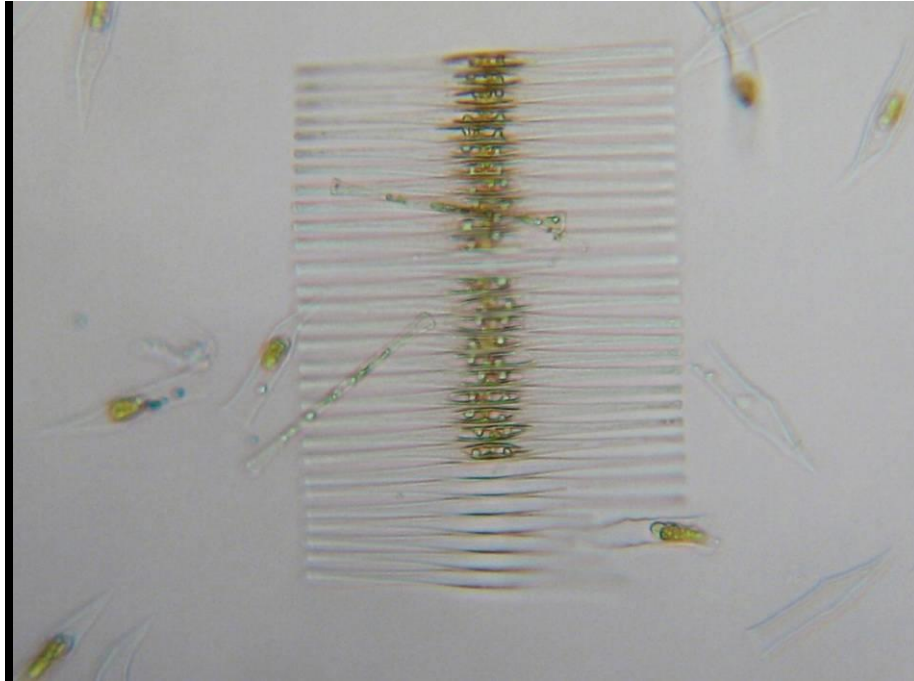


Fig. 79: *Fragilaria crotonensis* Kitton, 25x
Octubre, 2013

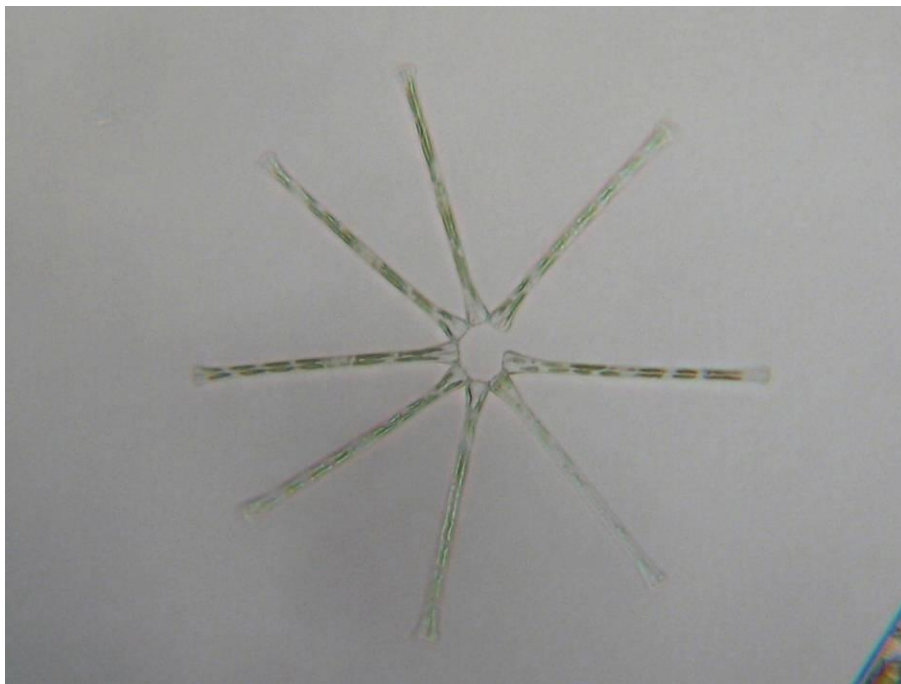


Fig. 80: *Asterionella formosa* Hassall 25x
Octubre, 2013

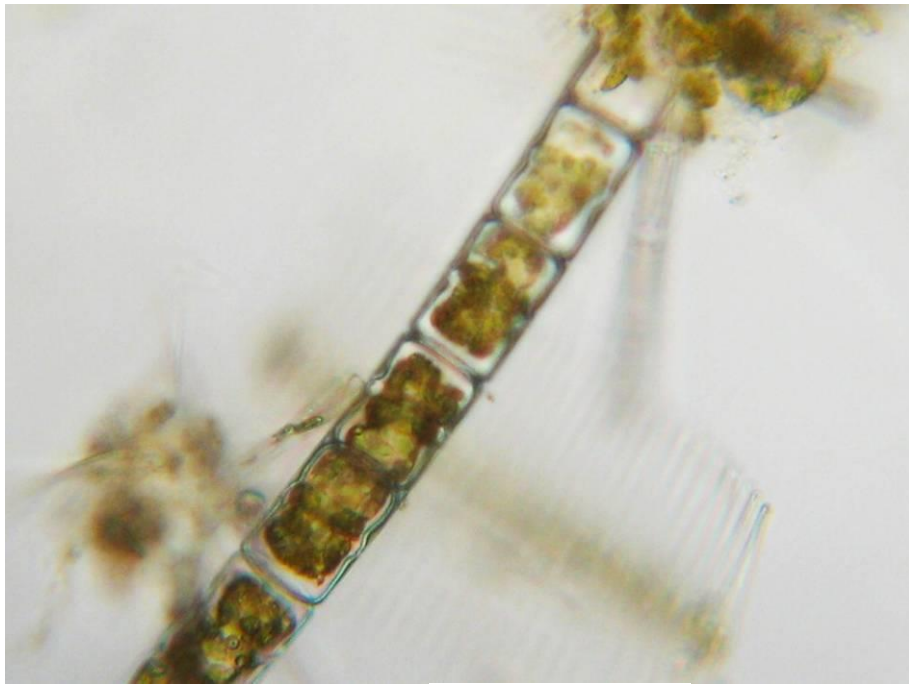


Fig. 81: *Melosira hustedtii* Krasske, 25x
Octubre, 2013

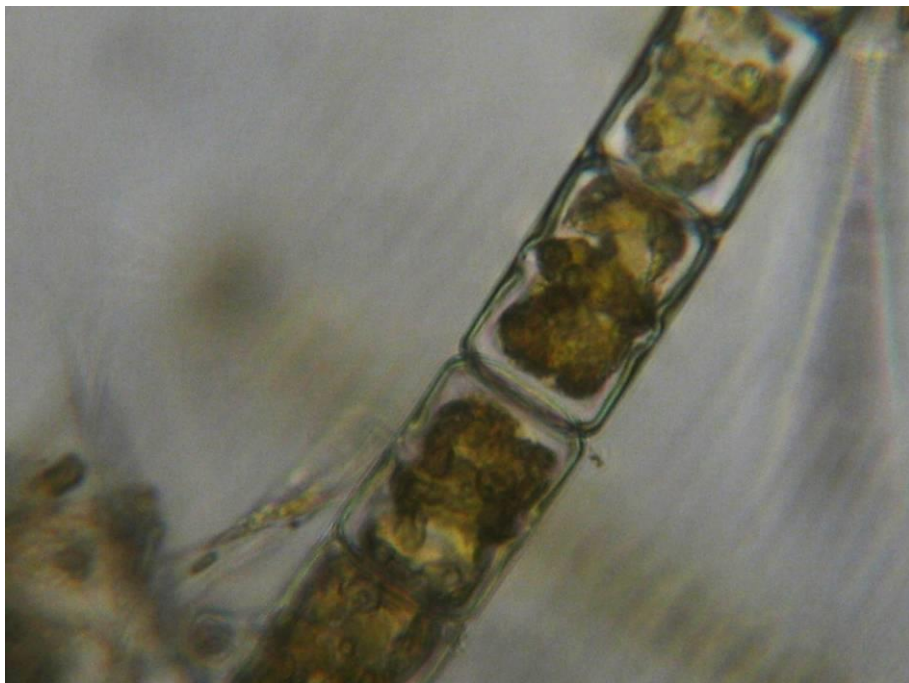


Fig. 82: *Melosira hustedtii* Krasske, 40x
Octubre, 2013

CLASE DINOPHYCEAE

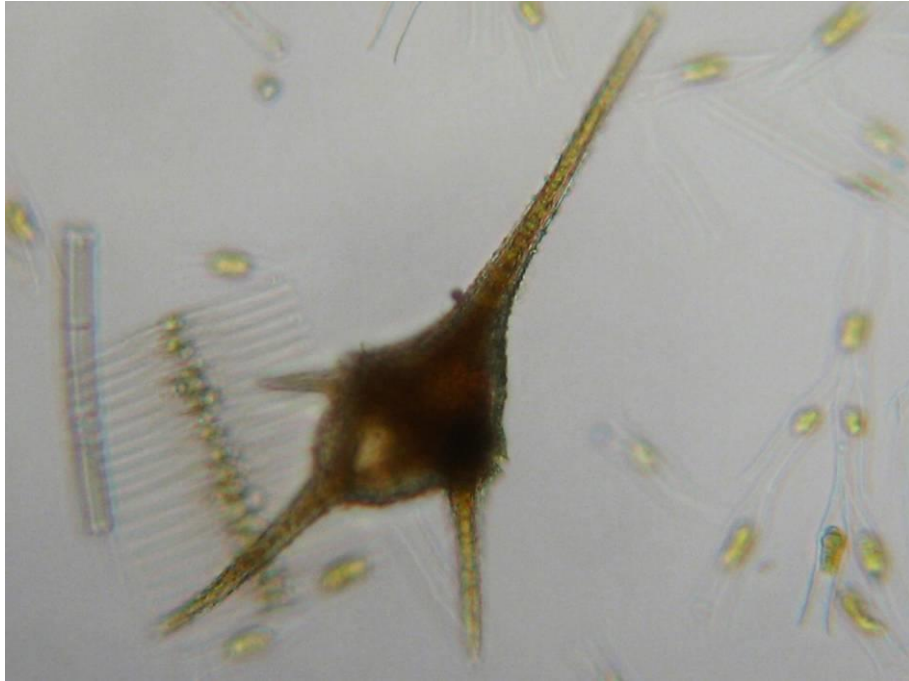


Fig. 83: *Ceratium hirundinella* (Müller) Dujardin, 25x
Octubre, 2013

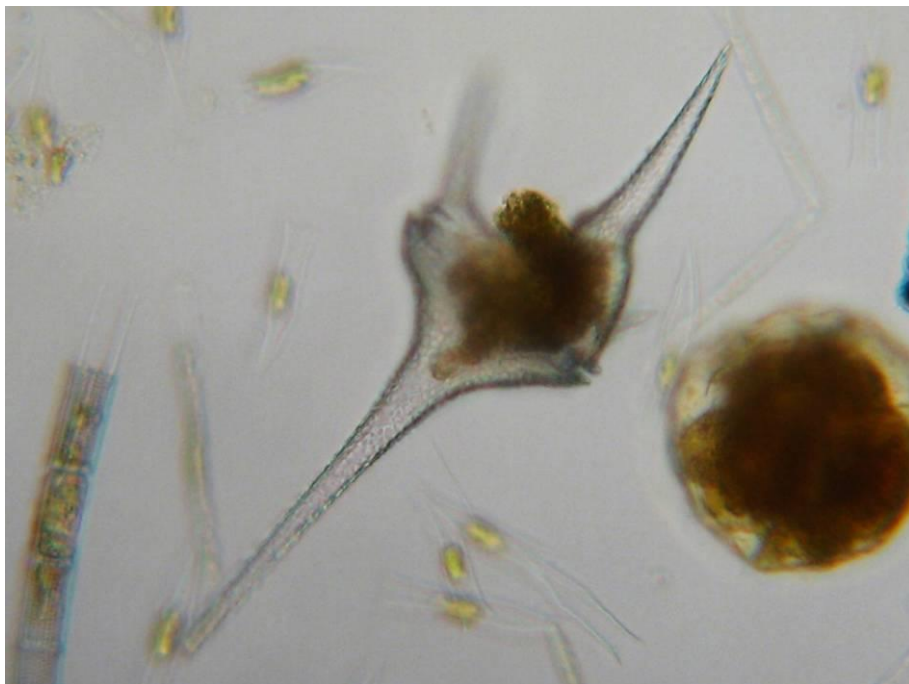


Fig. 84: *Ceratium hirundinella* (Müller) Dujardin, 25x
Octubre, 2013

CLASE CHRYSOPHYCEAE

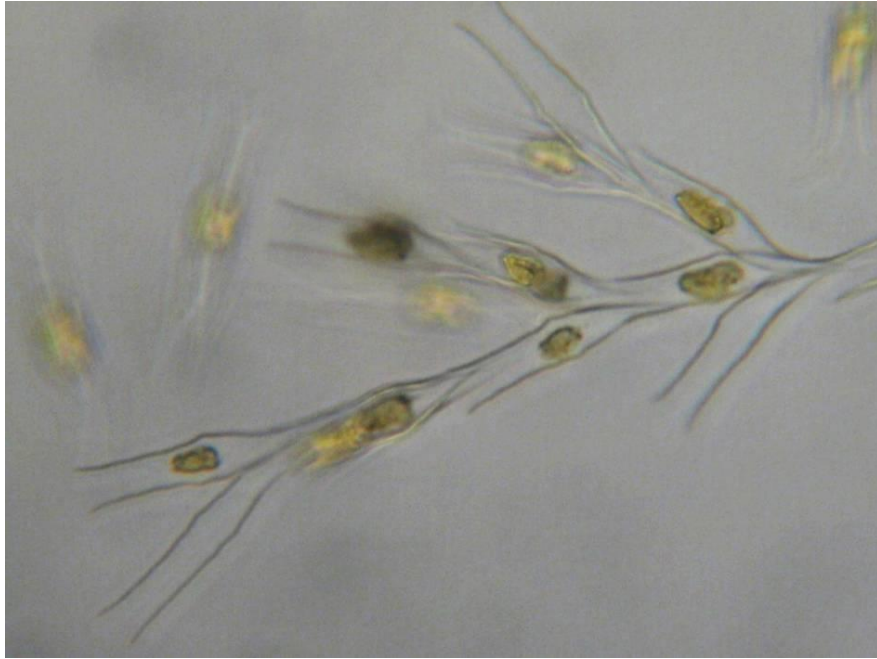


Fig. 85: *Dinobryon divergens* Imhof, 25x
Octubre, 2013

CLASE CHLOROPHYCEAE

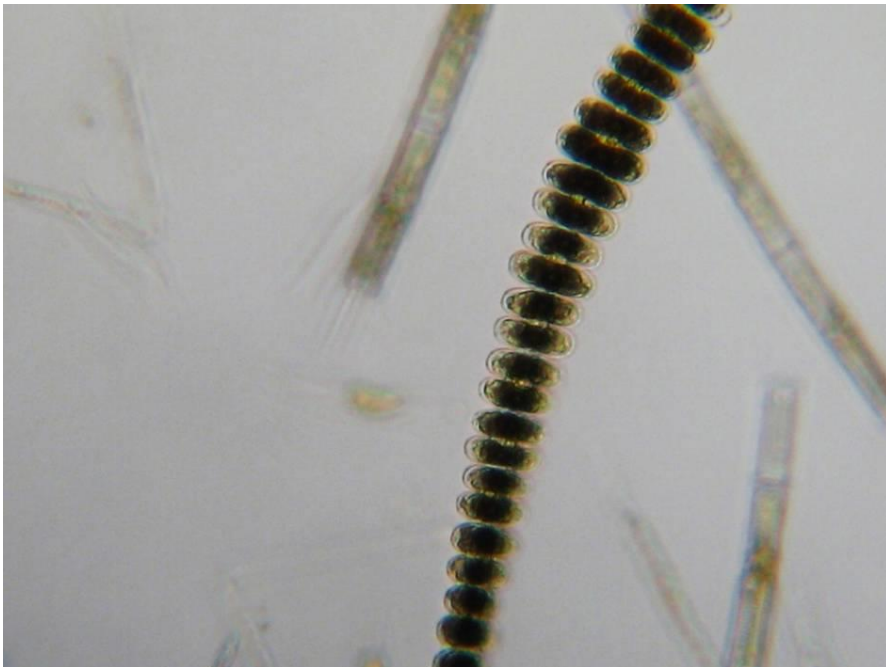


Fig. 86: *Sphaerososma aubertianum* Wm. West., 25x
Octubre, 2013

LAGO MAIHUE
CYANOPHYCEAE



Fig. 87: *Anabaena spiroides* Klebahn, 25x
Febrero, 2014

BACILLARIOPHYCEAE



Fig. 88: *Aulacoseira granulata* (Ehrenberg) Simonsen, 25x
Diciembre, 2013

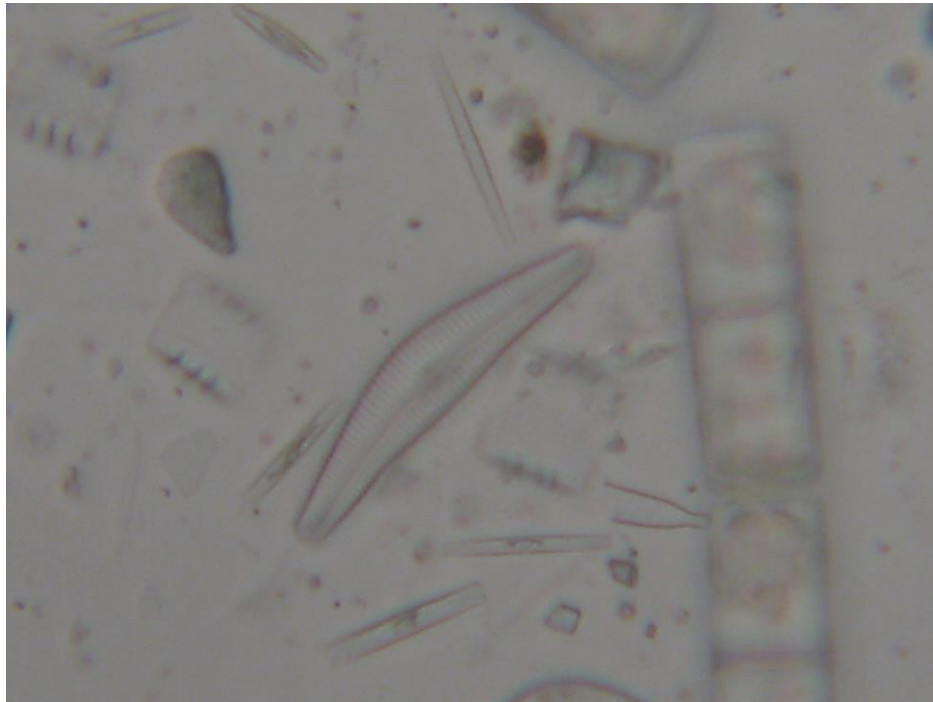


Fig. 89: *Cymbella lanceolata* (C.Agardh) Kirchner, 25x
Diciembre, 2013



Fig. 90: *Hannea arcus* (Ehrenberg) R.M.Patrick, 25x
Diciembre, 2013



Fig. 91: *Diatoma mesodon* (Ehrenberg) Kützing, 25x
Diciembre, 2014

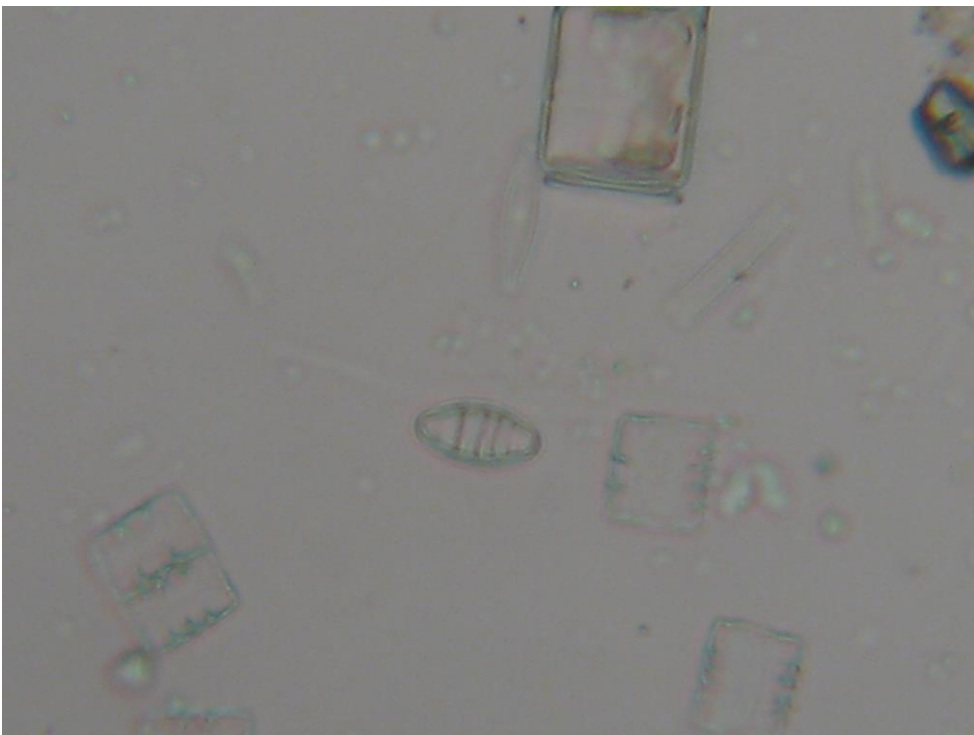


Fig. 92: *Diatoma mesodon* (Ehrenberg) Kützing, 25x
Diciembre, 2014



Fig. 93: *Hannaea arcus v amphyoxyis* (Rabenh.) R. M. Patrick, 25x
Febrero 2014



Fig. 94: *Melosira varians* C. Agardh, 25 x
Diciembre, 2013



Fig. 95: *Fragilaria ulna* (Nitzsch) Lange-Bertalot, 25x
Diciembre, 2014



Fig. 96: *Cymbella affinis* Kützing , 25x
Diciembre, 2013



Fig. 97: *Rhoicosphenia abbreviata* (C.Agardh) Lange-Bertalot, 25x
Diciembre, 2014

DINOPHYCEAE

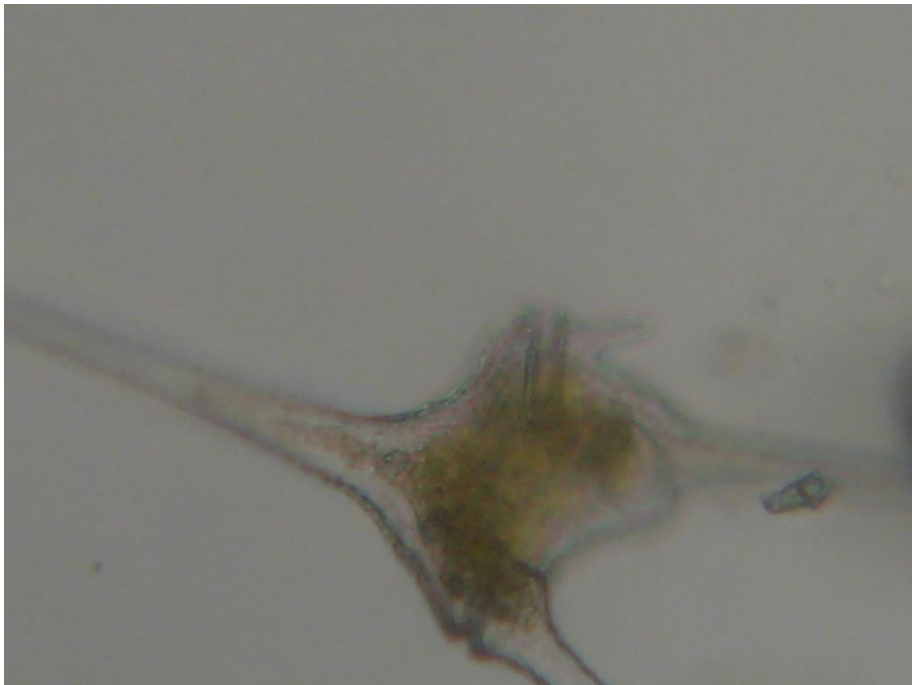


Fig. 98: *Ceratium hirundinella* (O.F.Müller) Dujardin, 25x
Diciembre, 2013

CLASE CHRYSOPHYCEAE

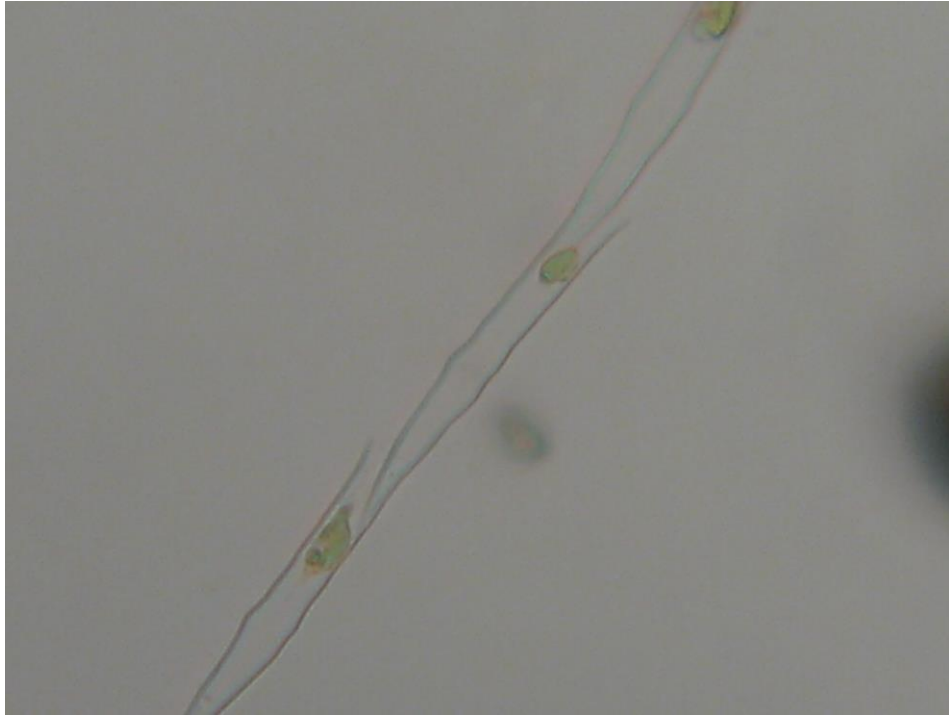


Fig. 99: *Dinobryon cylindricum* Imhof, 25x
Diciembre 2013

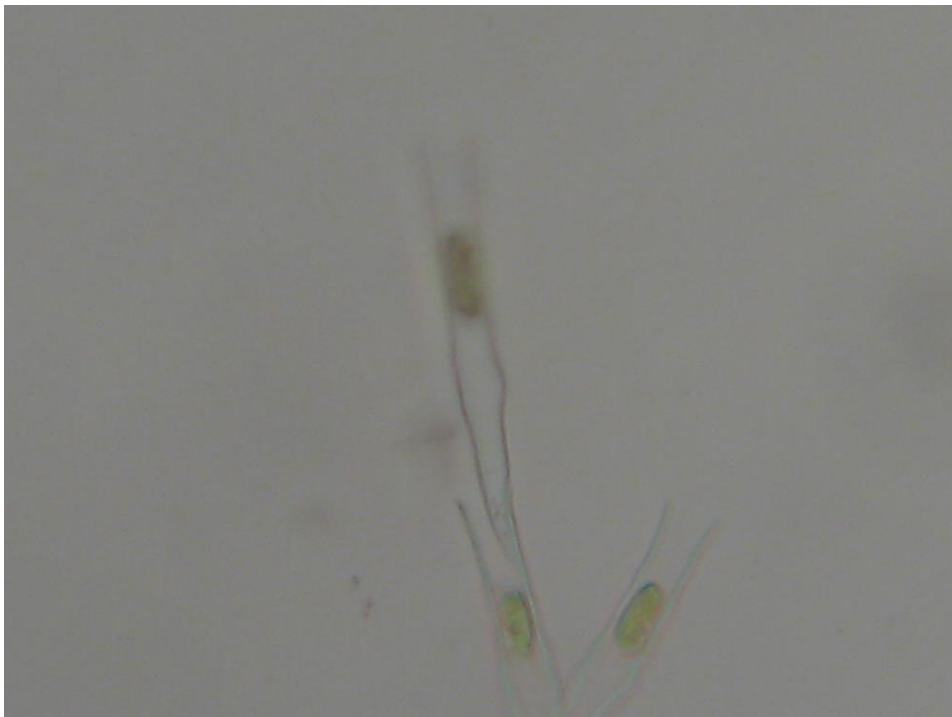


Fig. 100: *Dinobryon cylindricum* Imhof, 25x
Diciembre 2013

CHLOROPHYCEAE



Fig. 101: *Eudorina elegans* Ehrenberg, 25x
Febrero, 2014

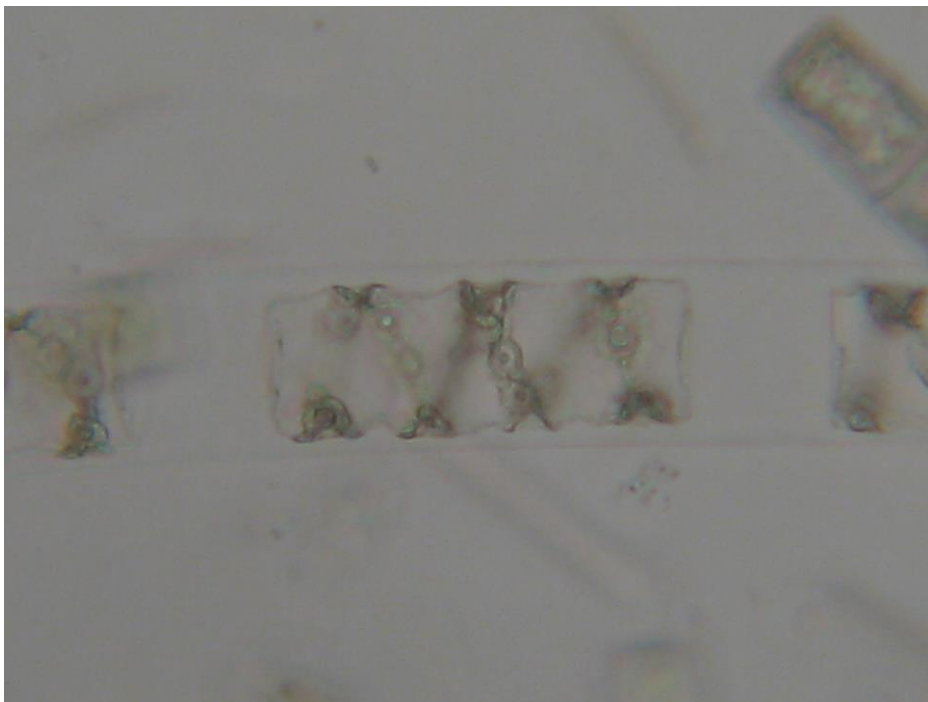


Fig. 102: *Spirogyra* sp., 25x
Diciembre, 2013

LAGO NELTUME

CLASE BACILLARYOPHYCEAE



Fig. 103: *Aulacoseira granulata* (Ehrenberg) Simonsen 25x
Octubre, 2013

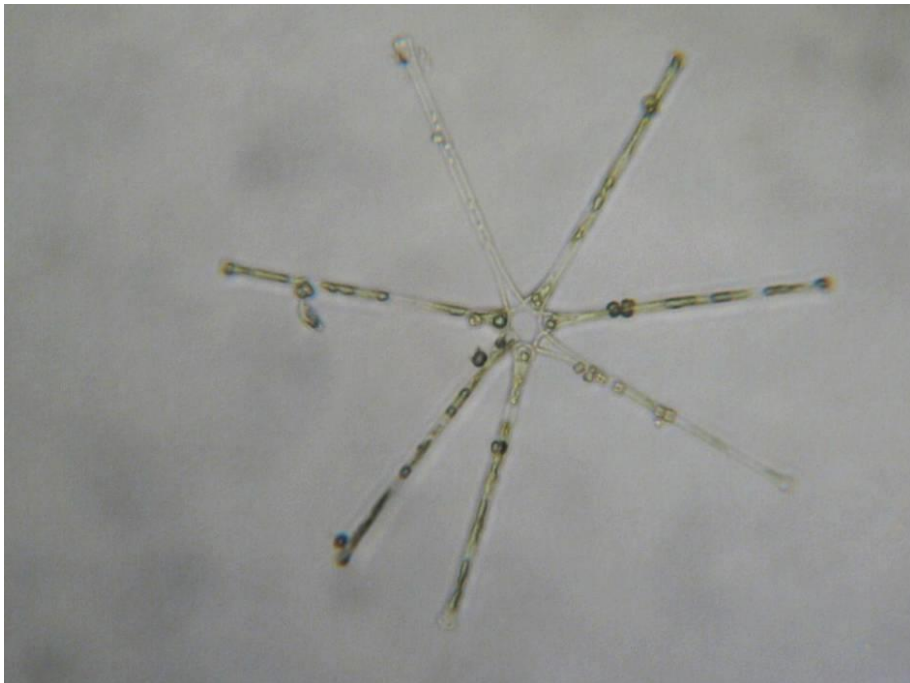


Fig. 104: *Asterionella formosa* Hassall, 25x
Octubre, 2013

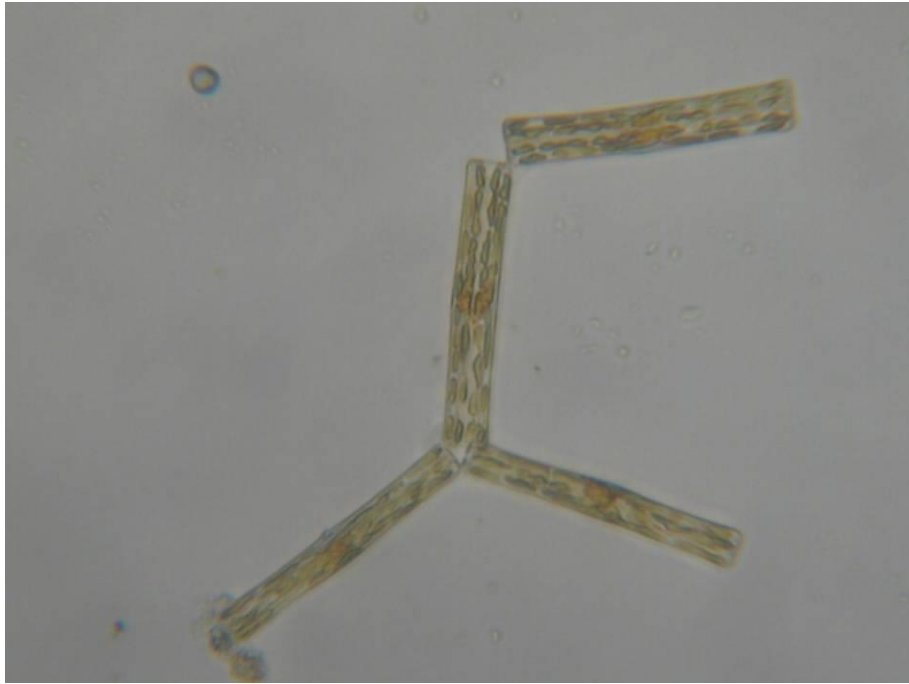


Fig. 105: *Tabellaria fenestrata* (Lyngbye) Kützing, 40x
Octubre, 2013

LAGO LLANQUIHUE

CLASE CYANOPHYCEAE



Fig. 106: *Anabaena aff constricta* (Szafer) Geitler, 25x
Marzo 2014

CLASE BACILLARYOPHYCEAE

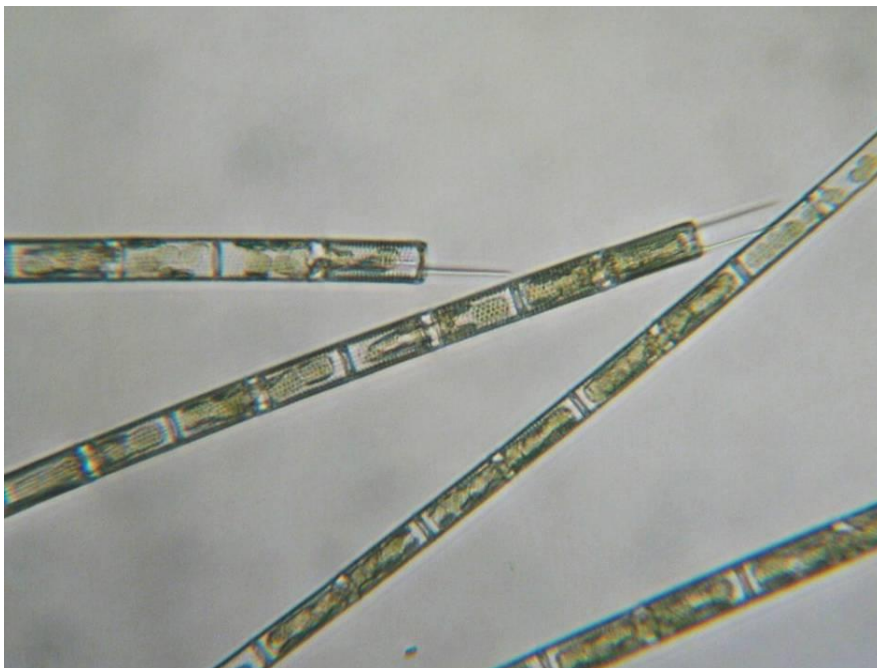


Fig. 107: *Aulacoseira granulata* (Ehrenberg) Simonsen, 25x
Agosto, 2013

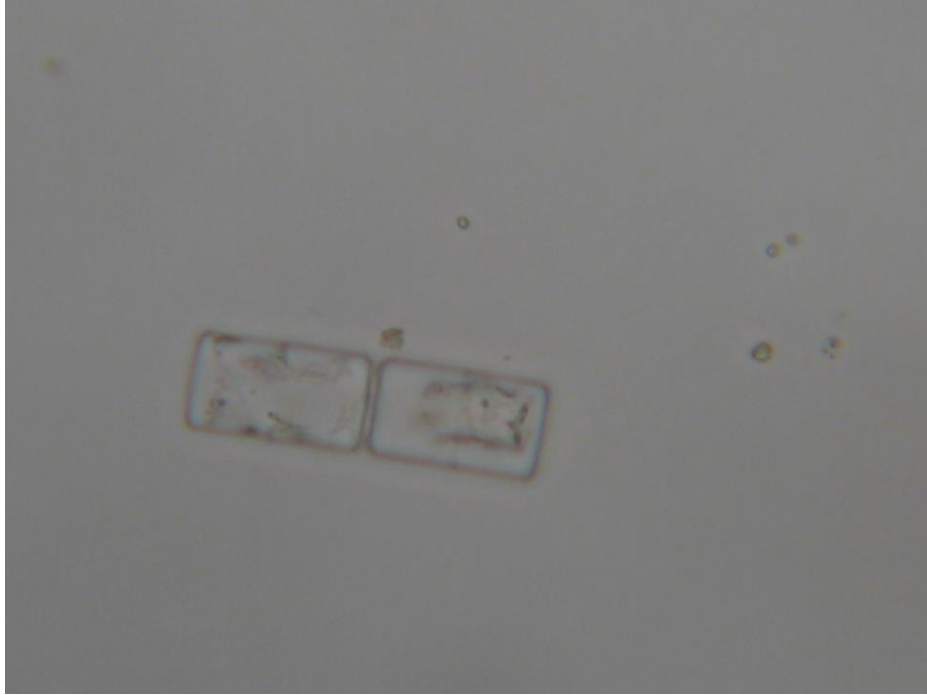


Fig. 108: *Melosira varians* C. Agardh, 25x
Marzo, 2014

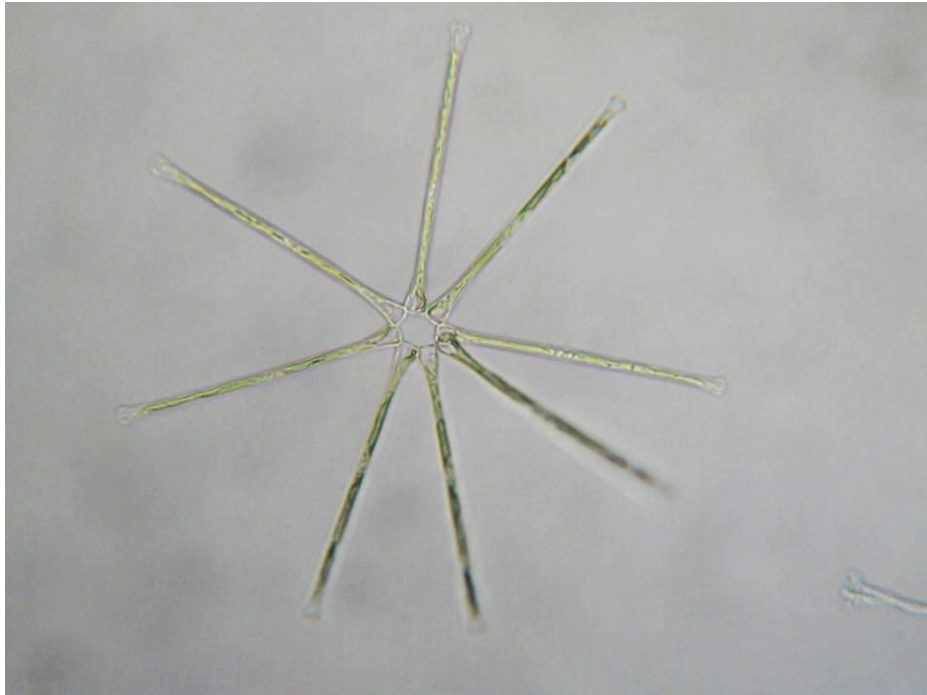


Fig. 109: *Asterionella formosa* Hassall 25x
Agosto, 2013

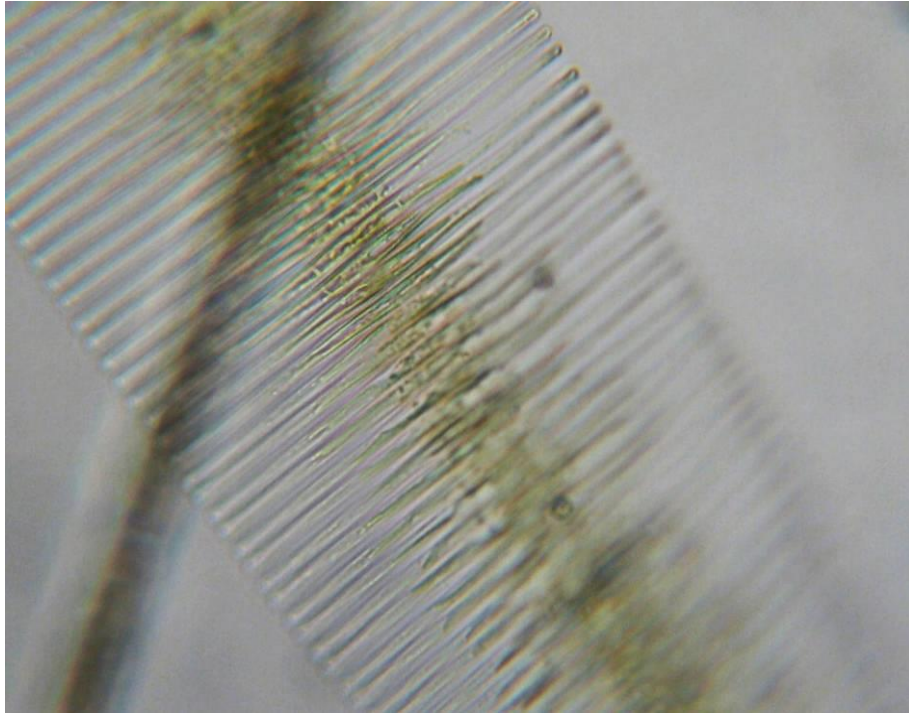


Fig. 110: *Fragilaria crotonensis* Kitton, 40x
Agosto, 2013



Fig. 111: *Surirella* sp., 25x
Marzo, 2014

DINOPHYCEAE



Fig. 112: *Ceratium hirundinella* (O.F.Müller) Dujardin, 25x
Marzo, 2014

CHLOROPHYCEAE



Fig. 113: *Staurostrum planctonicum* Teiling, 25x
Marzo 2014